



BUNDANON TRUST
ANNUAL REPORT 2011-2012

Bundanon is Arthur and Yvonne Boyd's gift to the Australian people. Bundanon Trust supports arts practice and engagement with the arts through its residency, education, exhibition and performance programs. In preserving the natural and cultural heritage of its site Bundanon promotes the value of the landscape in all our lives.

ISSN 1323-4358

BUNDANON TRUST

PO Box 3343
North Nowra NSW 2541
T 61 2 4422 2100
F 61 2 4422 7190
bundanon.com.au

CONTACT

Deborah Ely - Chief Executive Officer
administration@bundanon.com.au

Design: Boccalatte
Print: Southern Colour

PHOTOS

Cover & inside cover: Students from Bomaderry High School taking a sensory walk, Touched by the Earth program 2012.



Students from Bomaderry High School taking a sensory walk, Touched by the Earth program 2012.



CHAIRMAN'S OVERVIEW	5
2011-2012 REVIEWED	6
RESIDENCIES	8
PUBLIC PROGRAMS	12
EDUCATION AND OUTREACH	17
COLLECTIONS AND EXHIBITIONS	22
BUILT & NATURAL ENVIRONMENT	24
ACKNOWLEDGEMENTS	26
MANAGEMENT AND ACCOUNTABILITY	28
FINANCIAL REPORT 2011-2012	31

CHAIRMAN'S OVERVIEW



The need to grow has never felt more pressing than the past year. Our programs are at capacity and our ability to respond to the many opportunities within our reach is restricted. For this reason in 2011-12 we have

focused on how Bundanon might look over the next five to ten years; what infrastructure we will require and where it should be located. Based on several years of research and discussion, and drawing on expert project planning and architectural advice, we have developed a Masterplan for our Riversdale site.

The realisation of this Masterplan would enhance our unique programs for children and arts practitioners by providing much-needed additional creative spaces and accommodation. It would deliver a new Creative Learning Centre which would allow us to better use and safeguard our extraordinary art collection. It would deliver a range of critical visitor services currently lacking from Bundanon's existing infrastructure. In this plan multiple users could co-exist in residence on the site; larger groups could be accommodated; our heritage buildings would be repurposed for public access and use; staff would be properly housed and our events program could bring visitors to the site on a regular, rather than intermittent, basis. The Trust would be able to service larger audiences and its education and arts facilities, including its collection, would be available to more Australians. They are changes that would enable Bundanon to be the significant regional attraction it was always intended to be.

One of Bundanon's significant assets is its extraordinary site. Rather than treating the land as a mere backdrop to the arts activities, the board has determined to make Bundanon an exemplar of restoration and environmental custodianship. This is a huge task and not one that we can do alone. Accordingly, we have formed a powerful partnership with Landcare Australia. Utilising funds from the Borland Bequest and the Government's Biodiversity Fund, Landcare is working with the Trust to transform Bundanon's landscape through weed eradication and re-vegetation. Through this work we will see biodiversity enhanced and native habitat reconnected.

Within the arts and cultural sector this initiative is unique and represents an innovative leadership role for the Trust over the coming decade. Embracing the environment and encouraging research into the sciences was anticipated by Arthur Boyd and, remarkably, embedded in the Trust's constitution.

All of the directors are active in their work for the Trust. In particular, Geoff Ainsworth has lent his knowledge of and commitment to contemporary art as chair of the Artist in Residence Selection Committee; Gerard Sutton, his extensive skills and experience as chair of the Masterplan Sub Committee; Jenny Anderson, the Government's representative of the Board, her care, wisdom and prudence as chair of the Audit and Risk Committee.

The Trust's Board membership has been enhanced this year by the addition of corporate advisor, investor and analyst, Cass O'Connor and by Joe McIver Director of Education Solutions at Cisco Systems. Merran Dawson, a partner of PWC, has become the external pro-bono member of the Audit and Risk Committee.

There have also been departures. Richard Morecroft left the Board on 5 November 2011 after almost six years of committed service to the Bundanon Trust. Angela Clark left from the Board on 6 December 2011 after three years. Polly Boyd, Arthur Boyd's daughter, also left the Board this year, having served for more than 18 years. Polly brought to the Board not only the perspective of a practicing artist but also that of the Boyd family. She understood her father's intentions in gifting the Bundanon properties and has provided a touchstone for many decisions taken by the Board over the years. Her unique style and passion for the work of the Trust was an important contribution to the realisation of Arthur's intentions. The Trust continues to have a close and convivial relationship with Boyd family members, many of whom are regular visitors. (Both Alexander and Rupert Boyd gave musical performances at Bundanon in the last financial year.)

We are grateful for the enormous support we receive from the Australian Government from a range of funding programs through the Hon Simon Crean MP, Minister for the Arts; and from the staff of the Department of Regional Australia, Local Government, Arts and Sport.

Bundanon enjoys the support of many individuals from the Shoalhaven region and beyond who are committed to our endeavors and provide the necessary support for many of our activities. We continue to be grateful to them and the many trusts, foundations and local businesses who share the Bundanon vision. The Trust has an exceptional team of staff and volunteers who are Bundanon's 'true believers'. Our reputation for delivering programs and services to an exceptionally high standard is due to their professionalism and dedication.

Shane Simpson AM
Chairman

2011-12 REVIEWED



Left to Right, Artist in residence, David Chisholm, Emmanuel Bernardoux and Mauricio Carrasco, November 2011

Our programs continue to link the nationally recognised artists and arts companies who stay in our residency program with regional communities and visiting school children. Bundanon's bush setting offers a unique environment for learning about and experiencing the arts. Local schools, support organisations and agencies reap the benefit of Bundanon's presence in the Shoalhaven. This year we have continued to work closely with the disability sector and Indigenous communities as well as beginning new partnerships with Oolong House, a drug and alcohol facility in Nowra, and the recently established South Coast Correctional Centre.

The University of Wollongong entered into a three year Memorandum of Understanding with the Trust this year and already activity between the two organisations is intensifying with resident post-graduate groups, research staff and honours students visiting the properties and linking their academic research to Trust programs and resources.

This year 29,246 participants experienced education, public programs and exhibitions at Bundanon and across Australia – 8,395 staying on the properties, from one night up to six weeks. We hosted 307 artists and scholars in our residency program, 7% from overseas. Our touring exhibition of Boyd ceramics, *White gums and ramoxes*, attracted 13,404 visitors to regional galleries in Tasmania and across New South Wales. 5868 school children, students and teachers visited the properties and 1,375 took part in workshops and events in the region and around Australia. We attracted more schools to Bundanon than in previous years (108 in 2011–12), however many brought smaller numbers of students with them.

SITWORKS, our ongoing program to support research into Bundanon's history, geography and ecology, once again brought together a group of informed scientists, artists and locals to share information and pursue projects. A remarkable and tangible outcome of the weekend was the making of an Aboriginal bark canoe from a Stringybark sourced on the Bundanon property. The first bark canoe to float on the Shoalhaven River in living memory the Bundanon Nawi (canoe) was officially launched at Riversdale on Sunday 10 December 2011. The nawi took off with one of the Aboriginal canoe makers, Steve Russell, at the helm to great cheers and whooping. The canoe has subsequently featured in the National Maritime Museum's Indigenous watercraft conference in May 2012, where it was launched into Sydney Harbour, and in an exhibition at Casula Powerhouse. It is now permanently housed at Bundanon and used as an educational resource.

In September this year we were privileged to introduce 20 members of the Shoalhaven Aboriginal community to Namatjira family artists as they travelled with actors Trevor Jamieson and Derek Lynch, on their way to Wollongong to perform in BigHart's highly successful production of Namatjira. They connected strongly to both the land and to the Boyd artistic legacy, echoing so closely their own family history.

We remain grateful for the many Government and non-Government partners in assisting us to realise our mission to share Bundanon with as many Australians as possible.

In 2011–12 The Australian Government has once again supported the development of a new Boyd exhibition through the National Collecting Institutions Touring and Outreach Program. The Australia Council for the Arts supported our artist in residence program and Visions of Australia enabled our national tour of the Arthur and Merric Boyd ceramics exhibition.

Once again we are indebted to the NSW State Government, through ArtsNSW, for providing generous support for a number of our innovative education programs. 'Touched by the Earth', our cross curricular program, grew out of a pilot program supported in 2010 by the State Government. With their support this year, and with monitoring from our University of Wollongong Faculty of Education partners, the program aims to demonstrate that innovative and immersive approaches to education can accelerate learning and student well being.

ArtsNSW ConnectEd program enabled us to continue to bring schools from across the region to the Bundanon properties to meet with celebrated authors and illustrators during Book Week and for us to deliver, for the fourth year running, the extraordinarily successful kinesthetic program for primary age children with The Australian Ballet. Three disadvantaged schools from across the NSW benefitted from our *Adopt a School* residency opportunity. Due to State government support all of these programs are at no cost for participating school children. ArtsNSW has also supported the Trust to work with poetry company Red Room to deliver a remarkable program with Oolong House.

Over the next four years, with the support of Landcare Australia, Bundanon will receive the benefit of the Borland Bequest, along with funding from the Federal Government's Clean Energy Future program. As well as providing funding and expert advice to the Trust this initiative signposts new opportunities for Bundanon in environmental education and community engagement. This four year program will address weed infestation and regenerate degraded land across the properties, repairing the riparian zones and invigorating the Trust's agricultural enterprise. Bundanon will become an exemplar to the farming industry and through good environmental management biodiversity will be increased, native habitat restored and carbon capture enabled. The Trust's long term partners in the region, the Southern Rivers Catchment Management Authority, will join Greening Australia in a new alliance to oversee this regeneration of the Bundanon properties.

The staff remain the Trust's greatest resource and we are indebted to them for their commitment to the purpose of the Trust and the goodwill they bring to their work. Our partnerships across the national arts sector and in the Shoalhaven region continue to flourish. Bundanon is also increasingly recognised by the national and international arts community for its unique role in the development of the arts in Australia and we remain grateful to the artists and scholars who continue to share their ideas and energy with Bundanon and the wider community.

Deborah Ely
Chief Executive Officer

RESIDENCIES

In 2011–2012 the Artist in Residence program attracted a total of 307 individuals, encompassing 82 projects – including 26 visual arts, 17 writing, ten music, 21 performing arts and eight interdisciplinary projects. The year’s artists included a balance of emerging and eminent Australian artists, groups, collectives, companies and international guests.

In July 2011 Australian academic and poet Kit Kelen, based then in Macau, came into residence for the second time accompanied by Chinese poets/translators Fan Xing and Chris Song Zijiang from Association of Stories in Macao (ASM), a not-for-profit publisher. During their residency the Chinese poets met with twelve Australian poets resulting in the publication of a third volume in the ASM Australian Poetry series *The Noise of Exchange*, a new English-Chinese parallel text anthology.

The Trust has continued to attract overseas artists and in February 2012 we welcomed our first resident from the Africa Centre, Cape Town. The Centre supports artists who are highly engaged with both social issues and their art forms. Yonamine Sebastiao, originally from Angola and now residing in Portugal, is represented in major collections including the Pompidou Centre, Paris and has presented at both the Venice and Sao Paulo Biennales. His work on body scarification was informed by research and encounters with Shoalhaven Aboriginal residents.

Bundanon Trust has continued to maintain its significant connections with its established partners including Ironwood Early Music Ensemble, The Australian Ballet, Australian Theatre for Young People, Critical Path Choreographic Centre and The Performance Space.



In October 2011 Ironwood brought into residence five professional musicians and 20 developing artists as part of its Developing Artists Program. The program introduces the next generation musicians to historically informed performance. The group performed in schools and delighted regional students by talking about the instruments, the music and the process.

Critical Path returned to Bundanon in 2011 with a new initiative, Investigating Cross Borders Collaborative Works, working with Dancehouse (Victoria), STRUT (Western Australia) and the Goethe Institut. The aim of the laboratory was to provide a space for choreographers from South Asia, Australia and New Zealand to share processes and investigate ideas for future collaborative work across neighbouring continents. The laboratory was facilitated by Tang Fu Kuen, a dramaturg and curator from Singapore, and had an online presence activated by Pawit Mahasarinand, a dramaturg, academic, reviewer and writer from Thailand.

There’s an immediate respect for who you are and a regard for what you do so you work tirelessly and with focus. It’s a gift.

TANYA SPARKE, MUSICIAN IN RESIDENCE JANUARY 2012

In 2011 Bundanon Trust formed a new partnership with innovative poetry company Red Room which focuses on commissioning work and developing new contexts for the exploration of poetry. In July 2011 the Trust and Red Room worked together on presenting Club2540 for 20 Indigenous and non Indigenous men in rehabilitation in Oolong House, Nowra. The men were invited to come daily to Riversdale to explore poetry and visual arts.

In August 2011 Bundanon Trust hosted the British Council’s program ACCELERATE designed to boost and further the careers of Indigenous Australians working in the arts. The scheme provides an intensive, fully funded program for eight successful candidates with mentoring and industry placements in Australia and the UK.

In 2011 Siteworks, the Trust’s ongoing series of projects and discussions focusing research arising from the Bundanon properties, once again brought arts practitioners, scientists and scholars to stay on the properties and to share their responses to the site.



Clockwise from opposite page, artists in residence 2011-12: Madeleine Cruise and Veronica Bruce, Yonamine Sebastiao, Mimi Kelly, Dean Walsh and Cat Jones; Belvoir Writers Retreat - Anthea Williams, Tahli Corin, Tommy Murphy, and Shelly Lauman; Jan Hendrix.

INDIVIDUAL RESIDENCIES

- | | |
|-----------------------|---------------------|
| Patricia Alessandrini | Chris Jones |
| William Barton | Cat Jones |
| Delmae Barton | Jill Jones |
| Alicia Battestini | Mireille Juchau |
| Emmanuel Bernardoux | Jeff Kahn |
| Hans Bildstein | Margie Kaye |
| Diego Bonnetto | Nigel Kellaway |
| Lauren Brincat | Mimi Kelly |
| Matt Bromhead | Solange Kershaw |
| Veronica Bruce | Heidrun Lohr |
| Leah Bullen | Noel Lonesborough |
| Melinda Butt | Linda Luke |
| Mauricio Carrasco | Frank Mainoo |
| William Cheesman | Jessica McElhinney |
| David Chisholm | Georgie Meagher |
| Christine Cholewa | Jacqueline Millner |
| Kathy Cleland | Jennifer Mills |
| Leon Cmielewski | Wendy Morrow |
| Leah Collins | Janice Muller |
| Carey Corbett | Katie Noonan |
| Dominic Counahan | Darragh O’Callaghan |
| Madeleine Cruise | Bruce Pascoe |
| Bec Dean | Helena Pastor |
| Kylie Elkington | Trevor Patrick |
| Cloe Fournier | Heike Qualitz |
| Martin Fox | Steve Russell |
| Will French | Yonamine Sebastiao |
| Megan Garret Jones | Demelza Sherwood |
| Leah Gibbs | Cherry Smith |
| Su Goldfish | Tanya Sparke |
| Liv Gronlund | Victoria Spence |
| Aroha Groves | Josephine Starrs |
| Lesley Head | Phyllis Stewart |
| Nigel Helyer | David Sudmalis |
| Jan Hendrix | Karen Therese |
| Kathryn Heyman | Jim Wallis |
| Leigh Hobba | Dean Walsh |
| Yukie Hori | Annette Willis |
| | Laura Wills |
| | Fiona Winning |

Accelerate

Barbara Matters
Marilyn Miller
Kylie Morrison
Kevin O'Brien
Sharon Paten
Frances Rings
Jason Tamiru
Alick Tipoti

Appelspiel

Simon Binns
Nathan Harrison
Nicole Kennedy
Emma McManus
Joseph Parro
Troy Reid

Associated Stories of**Macao**

Kit Kelen
Chris Song Zijiang
Fan Xing

ATYP

Carolyn Burns
Alice Cooper
Fraser Corfield
Alex Cullen
Kendall Feaver
Sarah Gaul
Alysha Herrmann
Ewen Hollingsworth
Laura Hopkinson
Philip Kavanagh
Caleb Lewis
Alexandra Macalister-Bills
Eloise Maree
Ross Mueller
Peta Murray
Lydia Nicholson
Dan Prichard
Emrys Quin
Brooke Robinson
Lauren Sherritt
Georgia Symons
Jessica Tovey
Jessie Tu

Belvoir Writers Retreat

Tahli Corin
Eamon Flak
Shelly Lauman
Tommy Murphy
Anthea Williams

Brown Council

Fran Barrett
Kate Blackmore
Kelly Doley
Di Smith

Building 25

Kirby Medway
Chris Dunstan
Jennifer Medway
Kevin Ng
Mara Davis
Doug Niebling
Lily Calderbank

Critical Path

Doris Dzierzk
Tang Fu Kuen
Joelle Jacinto
Jerome Kugan
Rhiannon Newton
Cat Ruka
Fitri Setyaningsih
Jecko Siompo
Simon Stewart
Latai Taumoepeau
Vicki Van Hout

Curious Works

Aimee Fazon
Shakthi Sivanathan

Halcyon

Jenny Duck Chong
Sue Giles
Alison Morgan

Ironwood

Anthony Albrecht
Meredith Beardmore
Rachael Beesley
Tek Xin Benedict Chua
Charlotte Burbrook
Stephanie Eldridge
Nicole Forsythe
Tony Frost
Annie Gard
Emma Gregan
Arran Hamilton
Felicity Heine
Jen Kirsner
Laura Moore
John Myatt
Neil Peres Da Costa
Darryl Poulsen
Simon Rickard
Neil Simpson
Jennifer Stevens
Shaun Stewart
Anna Webb
Tim Willis
Daniel Yeadon

ISM

Rebecca Clarke
Tahli Corin
Matthew Edgerton
Joanna Erskine
Joshua Tyler

Oolong House

Plus 14
(privacy respected)
Chris Ardler
Stephen Ardler
Johanna Featherstone
Jonathan Hill
Warwick Keene
Dave Norseworthy

PACT Centre for Emerging Artists

Taryn Brine
Kate Brown
Madison Chippendale
Cameron Ellis
Cat Jones
Sam Koh
Lucille Lehr
Annabelle McMillan
Tanya Thaweekulcha
Julie Vulcan
Emma White
Amber Wilcox

Performance Space Indigelab

Jada Alberts
Eric Avery
Debra Beale
Katherine Beckett
Sonny Dallas Law
Andrea James
Colin Kinchela
Garth Knight
Nakkiah Lui
Erica McCalman,
Marilyn Miller
Alison Murphy-Oates
Christine Peacock
Naretha Williams

Plank

Robyn Backen
Annemaree Dalziel
Terry Hayes
Ian Hobbs
Neil Mackenzie
Richard Manner
Michelle Xe

POST

Zoe Coombs Marr
Mish Grigor
Natalie Rose

Red Room Company

Tony Britton
Johanna Featherstone

Shopfront

Sarah Emery
Katja Handt
Herlina Massing
Howard Matthew
Michael Mebus
Grant Moxom
Caitlin Newton Broad
Kevin Ng
Michael Piggott
Margot Politis
Saskia Vromans

Silver Shod

Sheridan Arbridge
Kat Henry
Shane Anthony Jones

Sirens Big Band

Lauren Benson
Jessica Dunn
Rose Foster
Lisa Gori
Kim Griffin
Harriet Harding
Claire Hollander
Fiona Keating
Ellen Kirkwood
Monique Lysiak
Rosie Marks-Smith
Melissa Mony
Loretta Palmeiro
Emma Riley
Milan Ring
Sophie Unsen
Ruth Wells

Siteworks

Diego Bonnetto
Barbara Campbell
Linda Dement
Leah Gibbs
Nigel Helyer
Alex Kershaw
Garth Paine
Jim Wallis

Strings Attached

Lee-Anne Litton
Kimberly McIntyre
Kathryn Puie
Alejandro Rolandi
Robert Thwaites

**The Stream/The Boat/
The Shore/The Bridge**

Andrew Bailey
Lauren Clelland
Caroline Gasteen
Penny Harpham
Georgina Humphries
Dan Koop
Max Milnem

Thrashing Without Looking

Thrashing Without Looking
Martyn Coutts
Elizabeth Dunn
Tristan Meecham
Willoh S.Weiland
Lara Thoms

**Tony Yapp and
Theatre Nottle**

Young an Weon
Lee Eu-A
Adeleine Flynn
Yang Heung Ju
Tim Humphrey
Lee Jee Hyun
On Jung Hun
Cathy Konig
Kim Min Kyung
Naomi Ota
Fred Wanack
Tony Yap
So Young Lim



PUBLIC PROGRAMS

Bundanon offers an extraordinary setting for Shoalhaven visitors and residents to experience celebrated performers, and to engage with artists, architects and scholars from across Australia.

In 2011–12 we hosted and presented five music events at Riversdale, beginning with the second of the David Pereira Cello Series, *Yearning for Home*, in July. This concert brought together David with long time collaborator, Australian pianist Tamara Anna Cislowska. Later in the year, David returned to Riversdale with Dr Geoffrey Lancaster, an internationally recognized authority on historical performance style who provided a fascinating linking commentary between pieces.

Former artists in residence, Halcyon vocalists Alison Morgan and Jenny Duck-Chong, presented a light and breezy concert at Riversdale in November 2011. Halcyon draws together some of Australia's most esteemed chamber soloists, conductors and singers in diverse programs of chamber music from across the globe and is the only Australian ensemble dedicated to the performance of new and recent music for voice and instruments. The Halcyon team, alongside soprano Jo Burton and harpist Genevieve Lang, enthralled the audience with their soaring harmonies.

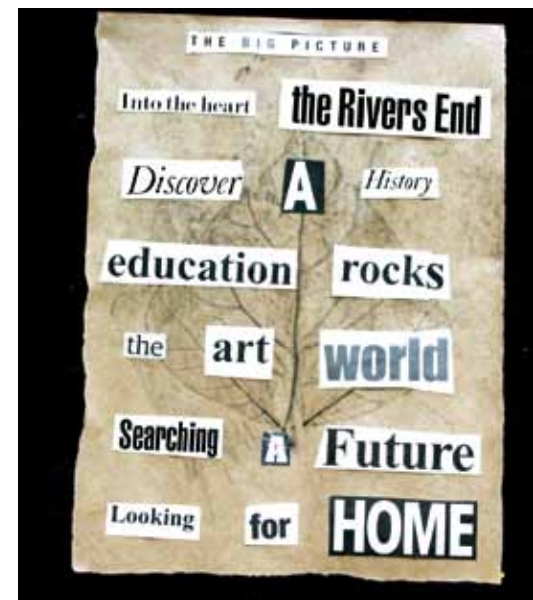
Australian Guitar Duo, Rupert Boyd and Jacob Cordover, based in New York and Portugal respectively, were on tour in Australia in March 2012 following the release of their

first CD, *Songs of the Forest*. At Riversdale they performed a repertoire of original Australian works from Nigel Westlake (who composed the CD title work), Ross Edwards and Phillip Houghton, as well as traditional classical works by Scarlatti and Grandados, with a little bit of Lennon and McCartney thrown in for good measure. The concert was also significant because Rupert is the grandson of architect Robin Boyd, Arthur Boyd's cousin.

Sirens Big Band, a 17 member all female jazz ensemble, were in residence at Riversdale in May 2012 and agreed to stay on and perform an eclectic concert weaving lilting African, Middle Eastern and Latin rhythms together with instrumental jazz.

In July 2011, we undertook a series of winter poetry projects including a writing workshop with respected poet Jill Jones, a community project Club2540 facilitated by Red Room Company director Johanna Featherstone and a poetry event *Poetic Infiltrations*, supported by South Coast Writers Centre.

In September Bundanon Trust hosted the Siteworks Conversation, our ongoing site-specific project in partnership with University of Wollongong, delivered with the support of Arts NSW and the Australia Council. The annual public field day and conversation had a focus on flora and fauna following a year of investigation by Andrew McGahey from Total Earth Care and wombat research by Dr Phil Borchard. Artist Linda Dement's piece



Killing the Host, an investigation of parasites and their wombat carriers, presented virtual scabies sculptures via an iPhone software program. Archeologist Dr Sue Feary shared her research into the development of the Trust's Indigenous Heritage Management Plan, undertaken with Heather Moorcroft. Her findings closely paralleled the observations of Human Geographer Leah Gibbs, whose paper, on place and "passing through", spoke of the traces of human passage across the Bundanon sites. Aboriginal artisans and artists Steve Russell, Noel Lonesborough and Phyllis Stewart worked with ethno botanists Jim Wallis and Diego Bonetto on the creation of a traditional stringy bark canoe. Robyn Backen's sound and light performance on the riverbank recreated the echoes of words written in nineteenth century settler diaries from our archives.

In Spring 2011 Bundanon took part in National Open Garden. The event included music by viola player Nicole Forsythe, didgeridoo player and composer William Barton and singer and poet Delmae Barton. There were garden walks and drop-in chats about local fauna-dwarf reed frogs, native bees and bower birds.



It was a real treat for me to be at Bundanon; it's such an amazing space and was a fantastic experience playing in such a beautiful setting for a great audience.

JACOB CORDOVER, AUSTRALIAN GUITAR DUO, MARCH 2012

Clockwise from opposite page: Sirens Big Band Concert, May 2012; Club 2540; residents of Oolong House; Poet and Activist, Patrick Jones, *Poetic Infiltrations*.



Club2540
18–21 July 2011

Twelve men and three staff members from Nowra drug and alcohol rehabilitation centre Oolong House visited Riversdale for four days to participate in a visual arts and poetry project led by Red Room's Johanna Featherstone. Red Room creates, promotes and publishes new poetry by Australian writers and takes poetry into the classroom and correctional centres. Johanna worked with local poet and teacher Jonathan Hill and visual artist Warwick Keen.

Poetic Infiltrations
23 July 2011

Poetic Infiltrations brought poets from across the country and China to Riversdale. Award winning poet Jill Jones offered a four hour writing workshop followed by an afternoon of readings and presentations. The event concluded with a panel discussion with visiting Chinese poets and translators about the challenges of translating poetry and the launch of *Wombats of Bundanon: an Anthology of 20 Australian Poets*, a bilingual publication developed and published by Association of Stories in Macau.

Participants included: Johanna Featherstone, Jill Jones and Annette Willis, Patrick Jones (via skype), Kit Kelen, Heidrun Löhr, Chris Mansell, Amanda Stewart, James Stuart, Fan Xing and Chris Song Zijiang.

Yearning for Home: David Pereira Cello Series
31 July 2011

Yearning for Home showcased the Cisłowska-Pereira Duo with guest violinist and speaker Chris Latham. The program included Chopin's Piano and Cello Sonata in G minor, Op. 65; Liszt's Elegie and Lugubre Gondola; Chopin's Larghetto from the F Minor Concerto (transcribed by Cisłowska) Rautavaara and Dvorak's 'Dumky' Piano Trio.

SITWORKS

24 and 25 September, 2011

Bundanon Trust hosted the Siteworks Conversation. A series of discussions and presentations about on-going research arising from the natural and cultural heritage of the Bundanon properties.

Participants included: Robyn Backen, Diego Bonnetto, Dr Phil Borchard, Barbara Campbell, Linda Dement, Dr Sue Feary, Leah Gibbs, Pam Green, Alex Kershaw, Noel Lonesborough, Andrew McGahey, Steve Russell, Phillis Stewart, Jim Walliss and Fiona Winning.

Open Garden and Garden Music
9 October 2011

Bundanon was once again part of the National Open Garden program which promotes the presentation private gardens to the public. The event included music on the homestead veranda with viola player Nicole Forsythe and three developing musicians; garden walks and talks about flora and fauna, and a concert with internationally acclaimed didgeridoo player and composer William Barton and his mother, singer and poet, Delmae Barton.

David Pereira and Geoffrey Lancaster
6 November 2011

David Pereira and Geoffrey Lancaster performed the Beethoven Sonata Cycle on Fortepiano and Cello, with commentary by Dr. Lancaster an internationally recognized authority on historical performance style.

Halcyon

27 November 2011

The virtuosic Halcyon team Jenny Duck-Chong and Alison Morgan joined with singers Belinda Montgomery and Jo Burton, and esteemed harpist Genevieve Lang, to present *Sirens*, a program of voice, much of which was written exclusively for them.

Australian Guitar Duo

18 March 2012

Rupert Boyd and Jacob Cordover presented a concert of original Australian works from Nigel Westlake, Ross Edwards and Phillip Houghton, traditional classical works by Scarlatti and Grandados, with a little bit of Lennon/McCartney thrown in for good measure.



Killing the Host, Linda Dement, Siteworks 2011



Robyn Backen, Siteworks 2011



EDUCATION AND OUTREACH

I learnt that my students had great imagination and they were so quiet when they were concentrating. This was a great life experience they would certainly have missed out on otherwise. The program was totally inspiring for all involved.

IAN SILVER ASSISTANT PRINCIPAL, BLACKETT PUBLIC SCHOOL

This year we have continued to widen our education offerings to both adults and children, with music, dance, architecture and environmental sciences as well as our established visual arts and writing programs.

In August we brought the architects of the Boyd Education Centre, Glenn Murcutt, Wendy Lewin and Reg Lark, face to face with the public for the first time to talk about the experience of designing this award winning building. Participants walked the site with Murcutt, Australia's leading architect, and interrogated him about his inspiration and design solutions for the building, as well as the special relationship between the creative partners. The sold out audience was drawn from all over Australia and featured many enthusiastic young architects. A teaching resource and QR code digital tour were created from the day.

Our commitment to design education has been extended to our residential school program. It is also an integral component of the unique cross curricular endeavour, *Touched by the Earth*, we are pursuing with Bomaderry High School. Originally piloted with support from State Government's *ConnectEd* program, its early success has led to a three-year project.

During a year-long program gifted and talented students in Years 7 and 8 met artists, scientists, Aboriginal elders and farm workers in a self-directed and cross-curricular investigation of Bundanon's social, architectural and cultural heritage. The program is being closely monitored by Faculty of Education staff and students from the University of Wollongong and their colleagues from the University of Western Sydney, who hope that by evaluating the educational outcomes of the program they will better understand the benefits of interdisciplinary teaching.

Our partnership with the Australian Ballet, now in its fourth year, was once again a great success. In 2011-12, pre-service primary school teachers from the University of Wollongong were offered sessions in kinetic literacy from the Australian Ballet's education consultant Helen Cameron. This is a long-standing example of Bundanon's efforts to connect visiting arts companies with schools. This year new variations of this model were offered through our partnerships with resident artists Ironwood Early Music Ensemble and the Sydney Symphony Fellows. In addition to taking programs into schools both companies offered programs and concerts while in the region. The Symphony Fellows also offered an outstanding music education program and concert to staff and inmates of the recently established South Coast Correctional Centre.

This year we invited author and illustrator Terry Denton to be our annual Book Week artist in residence. An inspirational presenter who entertained over 290 primary school students, Terry also conducted a specialist illustration workshop and career guidance presentation to gifted secondary students from regional high schools.

As our commitment and contacts in the disability sector grow so Bundanon has developed new programs in response. Carers of children with Cerebral Palsy have visited this year for a specially devised respite program

and the International Day of People with Disability was once again celebrated in late November with a range of Shoalhaven providers and their clients coming together for art workshops and conversation.

Bundanon has worked with 108 schools, tertiary and community organisations in the 2011–12 financial year. Over 5,860 participants accessed Education, Outreach and Enrichment programs on the Bundanon properties over the past year and 1,375 enjoyed Education programs in the surrounding region, around New South Wales and inter-State as part of our touring programs.

This year four schools from Western Sydney benefited from our *Adopt a School* program funded through Arts NSW and private donations. The program wholly supports a residential visit to Bundanon for a class of students from a school defined as disadvantaged (PSP) by the Department of Education, enabling children who wouldn't otherwise be able to visit due to financial hardship to experience our immersive arts programs.

Through our Outreach program high school students at risk of disengaging with formal education visited Bundanon to develop social skills and confidence through art making. The program is facilitated by our partnership with the YWCA's Links to Learning program. Bundanon's staff also

offered free art workshops in Marriott Park, Nowra as part of Shoalhaven City Council's Youth Week celebrations. The Trust continues to develop new teaching programs to best meet the needs of visiting schools and community members and has this year created an essential education resource on Arthur Boyd for school students. The Trust has recently been placed on the register of digital resource suppliers for the federal body resourcing the Australian Curriculum. Our education staff remain abreast of developments within the teaching profession and this year presented at the National Visual Arts Education Conference and represented Bundanon at the Visual Arts and Design Association state conference.





Top to bottom: Sydney Symphony Fellows education program at South Coast Correctional Centre, Book Week 2011 with Terry Denton and regional primary schools.

RESIDENTIAL VISITS

Primary & Secondary Schools

Arden
 Bede Polding
 Blue Mountains Grammar School
 Brigidine St Ives
 Bundeena Public School
 Covenant Christian College
 Cranbrook
 Danebank
 Epping Boys High School
 Ferncourt Public School
 Gleneaton Rudolf Steiner School
 Holy Spirit College, Lakemba
 International Grammar School
 Kambala
 Kildare Catholic College
 Kincoppal Rose Bay
 Kotara High School
 Lakes Grammar School
 Lorien Novalis Steiner School
 Macarthur Anglican College
 Manly Selective Campus
 Mc Donald College
 Newington College
 Nowra Anglican College
 Oxford Falls Grammar School
 Pittwater High School
 Presbyterian Ladies College
 Reddam House
 Redlands
 Riverina Anglican College
 Rouse Hill Anglican College
 Scotch College, Victoria
 Shoalhaven Anglican College
 St George Girls' High School
 St Leo's College
 St Luke's Grammar School
 St Mary's Cathedral College
 St Patrick's College
 Stella Maris
 Sydney Grammar School
 The Hills Grammar School
 The Illawarra Grammar School
 Trinity Grammar School
 Tyndale Catholic College
 Wyndham College

Tertiary Institutions

Meadowbank TAFE
 Northern Beaches TAFE
 Nepean TAFE
 University of New South Wales

DAY VISITS

Primary & Secondary Schools
 Bomaderry High School
 Culburra Public School
 St John the Evangelist High School
 St Michael's Public School
 Vincentia High School
 Warilla High School

Tertiary And Adult

Illawarra TAFE
 Illawarra TAFE Nowra
 University of Wollongong, Batemans Bay Campus
 University of Wollongong, Shoalhaven Campus
 West Wollongong TAFE

Community

Smith Family & Access
 Community Group
 ADFAS Shoalhaven
 Architecture Tours

ENRICHMENT PROGRAMS

Book Week

Bomaderry Public School
 Bomaderry High School
 Callalla Public School
 Falls Creek Public School
 Huskisson Public School
 Illaroo Road Public School
 Kiama High School
 Nowra High School
 St George's Basin Public School
 St Michael's Primary School
 Vincentia Public School

Ironwood Education Program

Bomaderry High School

Out There With

The Australian Ballet

Bomaderry Public School
 Callala Public School
 Falls Creek Public School
 Illaroo Road Public School
 Huskisson Public School
 Nowra East Public School
 Shoalhaven Heads Public School
 Tomerong Public School
 Vincentia Public School

Sydney Symphony Orchestra Fellows

Nowra East Public School
 Shoalhaven Correctional Centre

Touched By The Earth

Bomaderry High School

White Gums And Ramoxes

Balgowlah North Public School
 Barrenjoey High School
 Manly Vale Public School
 Manly Village Public School
 Mater Maria College

OUTREACH

Ageing Disability and Home Care
 Autism Spectrum Group
 Cerebral Palsy Alliance
 East Nowra Neighbourhood Centre
 Grandparent Carers
 Life Without Barriers
 Shoalhaven Crossroads
 Shoalhaven Mental Health
 Southern Youth and Family Services
 Youth Week Shoalhaven
 YCWA Links to Learning
 Bomaderry High School
 YCWA Links to Learning
 Nowra High School
 YCWA Links to Learning
 Shoalhaven High School

Adopt A School

Blackett Public School
 Fairvale High School
 Strathfield South High School
 Windsor South Public School

COLLECTIONS AND EXHIBITIONS

This year artist in residence alumnus Brook Andrew gifted to Bundanon's Collection two retro caravans, painted, in dazzling Wiradjuri referenced designs, drawing on his Aboriginal heritage. A component of his work *Travelling Colony*, originally shown at Sydney Festival, they stand at Bundanon in stark contrast to the surrounding Boydian landscape. The caravans are now a place of retreat for artists, who also use them for temporary installations, and an inspiration for visiting school children who have incorporated them into numerous artworks.

We have accepted 28 artworks into the collection this year. In addition to *Travelling Colony* an early Arthur Boyd portrait of his childhood friend, actor Barry Gordon, has come to us from the UK, bequeathed to the Trust in Gordon's estate. The collection has also benefited from the long-term loan of a Boyd Wimmera landscape from the 1950's.

An exhibition of prints from the *Lysistrata* suite of etchings by Arthur Boyd, inspired by the ancient Greek writer of comedy Aristophanes, was installed in the homestead gallery from March 2011.

The work was produced in collaboration with Jack Lindsay (son of artist Norman) in London in the early 1970s during the Vietnam War and tells an erotic and witty tale with an underlying theme of the futility of war.

As part of our ongoing partnership with Shoalhaven City Council we presented an exhibition of Boyd works from *The Lady and the Unicorn* suite of prints. The exhibition was on display Shoalhaven City Art Centre from October and was seen by 1,846 visitors. Further to this exhibition 16 works from the suite went to Art Play, Melbourne City Council's innovative children's art centre, as part of a Bundanon Educational program and exchange. There the exhibition supported the theme of *Unreal Beasts* through printmaking and weaving workshops.

Our national touring exhibition *White Gums & Ramoxes* was shown in five venues across Tasmania and New South Wales as it circulated Australia in the third and final year of its tour to fifteen metropolitan and regional galleries. The show was seen by 13,404 visitors this year and 60,338 since the tour's inception.

Funding has been secured from the National Collecting Institutions Touring and Outreach (NCITO) program for the further development of a new Boyd exhibition planned to open in May 2013 and to tour nationally. The exhibition will examine the social and political dimension of Arthur Boyd's artistic output in the context of contemporary events during his lifetime.

The digitisation of the art collection has been completed, annual updates of newly accessioned work is ongoing. In this reporting period the focus has been on continuing the digital capture of documents and images from the archive. Currently around 10% of a total of an estimated 35,000 documents has been completed. As images are digitised it is updated online increasing remote public access to the collection.

To mark the completion of the art collection's digitisation the Trust installed *From the Archive* in the Homestead at Bundanon in December 2011. The exhibition draws on the photographic records which trace the history of the Bundanon properties from the first European occupants to the building of the Boyd Education Centre in 1999.

Caring for our unique collection of artworks and the Boyd family archive from our isolated bush setting can be challenging. This year 16 artworks have undergone conservation treatment and/or cleaning, including paintings and works on paper. Our four dedicated collection volunteers have contributed 146 hours over the past twelve months, working on documentation of the books in the Bundanon Library and working with collection objects under supervision in the Study Centre. We have responded to 34 copyright requests and more than 15 written enquiries relating to the Bundanon Collection and Boyd family history.

Sundays at Bundanon Homestead have attracted 1,661 visitors this year, with organised groups and school students attending during the week. The Bundanon guides and attendants have continued to provide an outstanding service to all our visitors. This year they undertook a field trip to the Sturt School and Gallery in Mittagong to investigate other leading examples of museum practice.

EXHIBITIONS

Lysistrata, Arthur Boyd

13 March to 23 October 2011

Upstairs Gallery, Bundanon Homestead

From the Archive

From December 2011

Upstairs Gallery, Bundanon Homestead

The Lady and the Unicorn

Shoalhaven City Art Centre

15 October to 7 December 2011

Art Play, Melbourne

From 30 June 2012

White Gums and Ramoxes

29 July to 11 September 2011

Carnegie Gallery, Hobart, TAS

28 October to 11 December 2011

Burnie Regional Art Gallery, Burnie, TAS

10 February to 25 March 2012

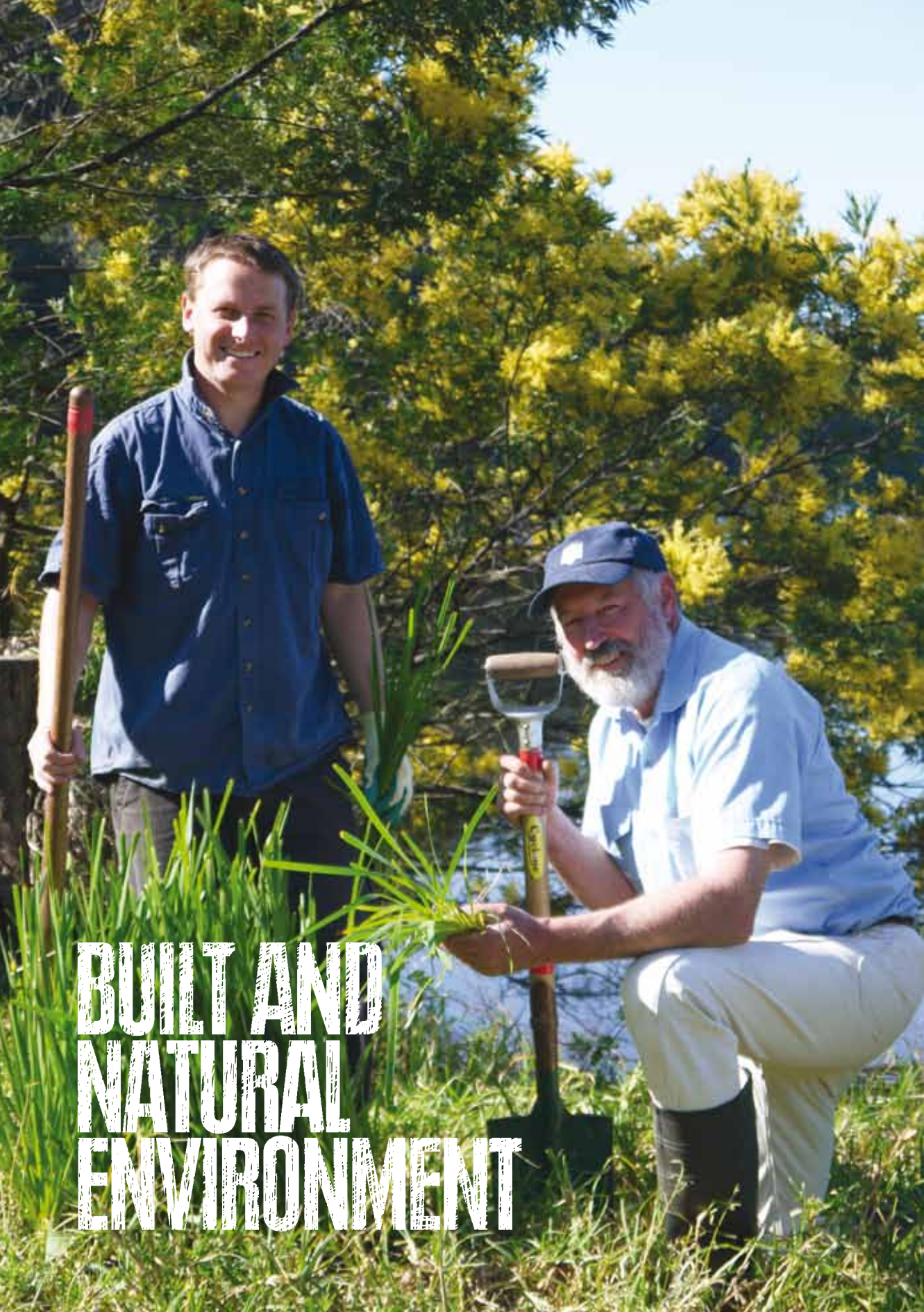
Lake Macquarie City Art Gallery, NSW

8 June to 15 July 2012

Manly Art Gallery and Museum, NSW

20 July to 16 September 2012

Gosford Regional Art Gallery, NSW



BUILT AND NATURAL ENVIRONMENT

Following a receipt of a Land Management Plan in November from Total Earth Care an Implementation Plan was commissioned from acknowledged South Coast expert on vegetation recovery, Jock Waugh. These two documents formed the basis of Landcare Australia's successful application to the Federal Government's Biodiversity Fund to raise funds to create an environmental and agricultural exemplar of all Bundanon's properties.

Working with Southern Rivers Catchment Management Authority and Greening Australia, Bundanon Trust will begin to address urgent land management challenges on the properties, including serious weed infestations at Haunted Point and in the riparian zones. The funding will make inroads into the remedial work which needs to be undertaken on the properties, however the Trust has made a commitment to prioritise caring for its landholdings and to establishing the resources required to maintain the benefits of this initial investment.

This new, long-term vision for the properties has given direction to the location of new fence lines, the creation of paths through the landscape and the positioning and species of future plantings. The creation of new fence lines to better enable sequential farming has now begun and damaged and redundant fences are being removed. A splendid new heritage style fence has been built to create a new River Walk in front of the Homestead. Now visitors can return from the river walk and experience a stunning view of the homestead as it would have been seen in the early Colonial period when the only access to the Bundanon property was by punt.

After several years in the planning stage we have now installed new signage across all the Trust properties. The new signs provide information and direction as well as reassurance to our many visitors who often wonder 'are we there yet?' or 'have we missed the turn?' when they drive through the bush between the properties.

A constant program of infrastructure upgrades is in place at Riversdale and Bundanon at all times. In 2011-12 significant work was undertaken on the pavers at the Boyd Education Centre, with construction fitting around heavy use by customers. This complex process of removing and resetting large areas of brickwork has been undertaken with the advice of the building's architects Glenn Murcutt and Wendy Lewin. This work will continue into the next financial year.

A remote-controlled, double blind system – providing for UV protection and full blackout- has been installed in the clerestory windows in the Boyd Education Centre. These were part of the original design, but not installed at the time due to cost. The refrigerators have also been replaced in the centre, with the original built-in design feature restored.

Solar power now provides hot water in the artist in residence complex and climate control was installed in the Collection store and staff offices at Bundanon and new technology infrastructure has been installed in an attempt to stabilise erratic communications from this isolated site.



Top to bottom: Repairing the pavers in the Boyd Education Centre; Flooded culvert at Riversdale 2011 and Bundanon staff undertaking first aid training. Opposite page: Bundanon Landcare, with staff Tim Dallimore and Ralph Dixon.

ACKNOWLEDGEMENTS



Without the generosity of individuals we would struggle to engage so many school children in the creative arts; support the innovative work of Australian and overseas artists and provide the public with access to the unique, and fragile properties that make up Bundanon.

A three year memorandum of understanding was established with the University of Wollongong, with financial support for collaborative arts, educational and environmental programs. The agreement involves the Faculty of Creative Arts, The School of Earth and Environmental Sciences and the Faculty of Education. Bundanon's SITEWORKS program is an example of a program strengthened through this funding. We welcome a deepening engagement with this outstanding education provider in our region and see enormous benefit for the Trust in interactions with the scholars and students who now integrate Bundanon into their academic pursuits.

The other significant relationship supports our growing commitment to caring for the landscape. The Borland Bequest, through Landcare Australia, has assisted in the establishment of the Living Landscape initiative valued at \$1.085 million over four years. Funding in support of the project, from the Federal Government's Biodiversity Fund, was announced by Tony Bourke, Minister for Sustainability, Environment, Water, Population and Communities, on 4 May 2012. Other key partners in the project, which will to rehabilitate Bundanon's bush land and revitalise its agricultural enterprise, are the Southern Rivers Catchment Management Authority and Greening Australia.

Bundanon remains grateful for the support of numerous Shoalhaven businesses and community organisations that recognise our role in strengthening community resilience

through the arts and consistently support our work with children and families. Long term sponsors Stuarts Coaches have provided transport subsidy for over 400 local school children to visit Bundanon and Riversdale for education enrichment programs this year.

A new partnership with local winery Silo's Estate commenced in 2011, providing wine, accommodation and carbon offset support for our concert and events programs. In May members of the Silos Wine Society and Trust supporters enjoyed an intimate piano recital by Alexander Boyd, Arthur Boyd's grandson, at the Bundanon Homestead. The event was a wonderful opportunity for wine society members, supporters and people new to the South Coast region to connect with Bundanon.

The Trust is most grateful to Alexander Boyd and his father Jamie Boyd for their continuing support for music programs at Bundanon.

Now in its third year the Trust's Brown Room benefaction program is named in honour of the room at the hub of Arthur Boyd's childhood home and the birthplace of the family's creative enterprise. Through the program the Trust hopes to raise much needed funds to continue its work providing school children and adults with unique opportunities for engagement with the arts, to support the cross-disciplinary artists-in-residence program and to maintain the ongoing care of the Bundanon properties. We are extremely grateful to all of the committed individuals who enable opportunities through their support.

Our donors enable children who would otherwise not be able to visit, due to social or economic disadvantage, the chance to stay at Bundanon for several days and supports day programs for children at risk and groups with special

needs. Bundanon's long standing friends in the region the Australian Decorative and Fine Arts Society (ADFAS Shoalhaven) concluded their three year Youth Arts funding to enable staff and students from local high schools to participate in visual arts education days at Bundanon as part of their Young Arts strategy.

Bundanon Trust is supported by the Australian Government through the Department of Regional Australia, Local Government, Arts and Sport. The Minister for the Arts, The Hon Simon Crean MP has been the Minister with responsibility for Bundanon Trust since 14 September 2010. We thank the Minister and the Department staff for their ongoing advice and support. We also acknowledge the support of our local Member for Gilmore Mrs Joanna Gash MP.

The State Government, through Arts NSW, and the Commonwealth Government through the Australia Council for the Arts have consistently supported our work with artists, school children and arts companies. We also acknowledge the financial support of the Southern Rivers Catchment Management Authority through the Southern Rivers Bush Incentives Program. This has enabled us to address weed eradication on-site through funding over ten years of a dedicated position and equipment at Bundanon and Riversdale.



Opposite page: Adopt a School, Windsor South, June 2012. Above left to Right: Raj Ray, Alexander Boyd and Deborah Ely, supporters event Bundanon Homestead

The Bundanon volunteers are legendary, providing professional support for our work with the collection and hundreds of hours every year of interpretation for visitors to the Bundanon site. Our beautiful heritage garden and the concert programs also rely heavily on their input. We would not be able to open Bundanon to the public without their dedication. This year the team has been enlarged by landcare volunteers determined to see the landscape maintained for future generations.

Our artists in residence remain our greatest asset and most generous supporters. Through their belief in what we do, their commitment to sharing with the wider community, children and their peers Bundanon is able to provide extraordinary opportunities for engagement with the arts. We particularly thank them for their many donations of artworks, scripts and scores to the growing Bundanon collection.

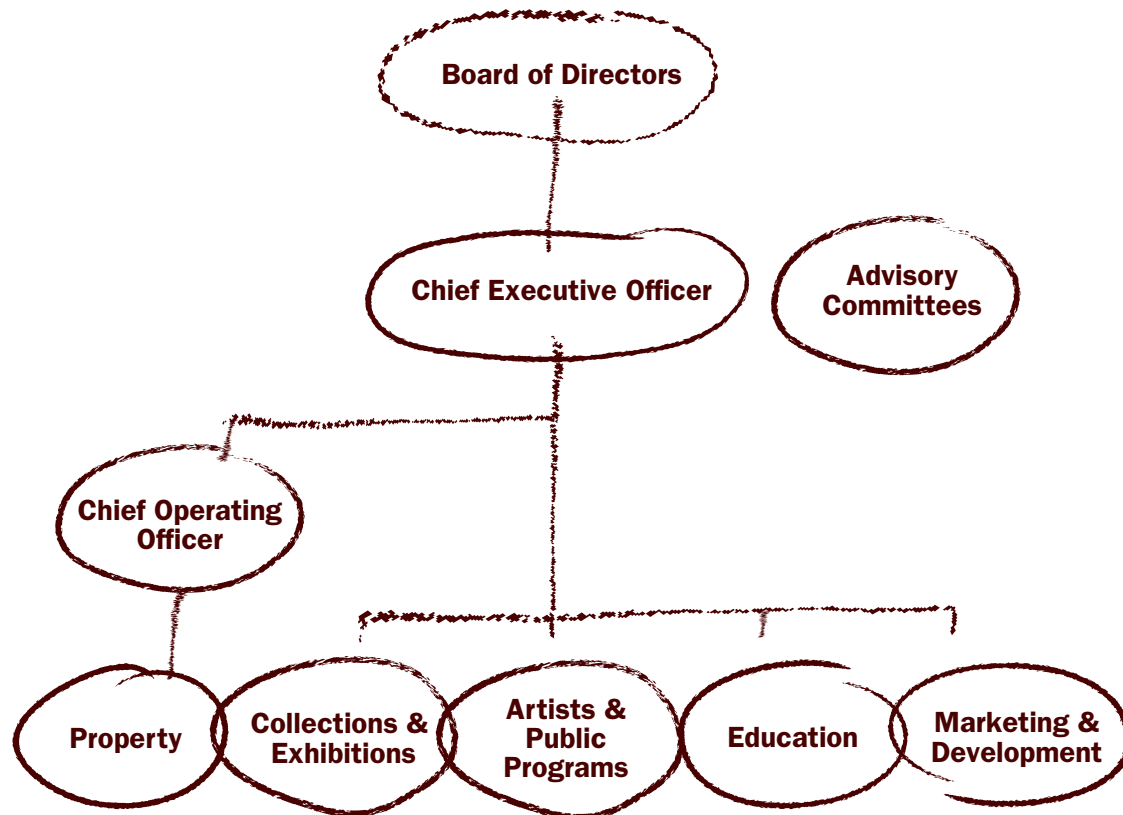
SUPPORTED BY

Geoff Ainsworth AM
Antoinette Albert
Jenny Anderson
Arts NSW
Australia Council for the Arts
Australian Decorative and Fine Arts Society
Australian Government, Office for the Arts
Carol and Tony Berg
Jamie Boyd
Jane Bridge
Angela Clarke
Grace Cochrane
Clayton Utz
Simon Elliott
James Fairfax AC
Jack Featherstone
Andrea Goldsmith
Tony Kay Pty Ltd
Peter and Angela Keel
Mike Legett
Manildra Group
Richard Morecroft
National Collecting Institutions Touring and Outreach Program
Wendy and Fred Niesche
Vicki Olsson
Phillip Gosse and Anabel Parbury
Noeline Sandblom
Shoalhaven City Council
Silo's Estate
South Coast Style
Southern Rivers Catchment Management Authority
Tony Strachan
Stuarts Coaches
University of Wollongong
Visions of Australia
Peter Watts AM
Peter Weiss AM

WORKING WITH

Accessible Arts
Access Community Group
Africa Centre
Architecture Foundation Australia
Art Play
Aspect South Coast School
Association of Stories in Macau
Australian Theatre for Young People
Cerebral Palsy Alliance
Bomaderry High School
Critical Path
Dancehouse
East Nowra Neighbourhood Centre
Essential Personnel
Historic Houses Trust, Merooga
Ironwood
Landcare Australia
Life without Barriers
Musica Viva
Nowra Family Support Services
Nowra Local Aboriginal Land Council
NSW Department of Education and Training
Oolong House
Open Gardens Australia
Red Room Company
Shoalhaven City Arts Centre
Shoalhaven Crossroads
Shoalhaven City Council
Shoalhaven Mental Health
Shoalhaven Literary Association
Sounds Baroque
Southern Youth and Family Services
South Coast Correctional Centre
Strut Dance
Sydney Design 11
Sydney Symphony Fellows
The Australian Ballet
The Disability Trust
Illawarra
The Performance Space
UNESCO Aschberg
Bursaries for Artist
YWCA Links to Learning

MANAGEMENT AND ACCOUNTABILITY



BOARD OF DIRECTORS

Shane Simpson AM
Chairman
Sydney, NSW

Geoff Ainsworth AM
Sydney, NSW

Jenny Anderson
Canberra, ACT
Commonwealth
Representative

Cass O'Connor
Sydney, NSW

Simon Elliott
Canberra, ACT

Tony Emery
Shoalhaven, NSW

Joe McIver
Illawarra, NSW

Gerard Sutton AO
Illawarra, NSW

Peter Watts AM
Sydney, NSW

(Polly Boyd, Director to
6 December 2011)

(Angela Clark, Director to
6 December 2011)

(Richard Morecroft,
Director to 5 November
2011)

STAFF

Chief Executive Officer
Deborah Ely

Chief Operating Manager
Richard Montgomery

Finance Manager
Cherrie McDonald

Finance Assistant
Carole Jeffcott

Administration Officer
Cara Moloney

Strategic Programs Manager
Clarissa Arndt

Property Manager
Henry Goodall

Property Officer
Tim Dallimore

Property Assistants
Ken Stewart
Ralph Dixon

Caretaker
Gary Hogan

Program Manager
Regina Heilmann

Program Officer
Tracie Miller
(to 17 October 2011)

Collections & Exhibitions Manager
Jennifer Thompson

Collections & Exhibitions Officer
Keren Ruki (to 12 January 2012)

Open Day Reception
Simba Gibson
(to 26 February 2012)
Helen Drury
Brandt Noack
(from 19 February 2012)

Education Manager
Mary Preece

Education Officer
Jim Birkett

Education Officers
Glenda Borchard
Randall Sinnamon
Saskia Vrenegoor

Marketing & Communications Officer
Rachael Austin
(to 9 February 2012)

Marketing & Communications Manager
Kate Dezarnaulds
(from 26 March 2012)

Housekeepers
Carol Hunter
Oraphin Namek
Sandra Adams
(from 17 October 2011)
Barbara Smith
(to 30 September 2011)

Volunteers
Lynda Angell
Barbara Armitage
Adam Austin
Jennifer Austin
Neil Austin
Glenda Bahy
Linda Balding
Jim Bradley
Marion Bradley
Rosemary Brigden
Fran Collins
Helen Drury
Chloe Gibbon
Claire Gibbon
Bob Harnwell
Lyn Harnwell
Kathryn Hudson
Sue Irvin
Wendy Lindsay
Helen McCosker
Vicki McDonald
Chris Murphy
Annie Palmer
Christine Radywyl
Mark Rayment
Richard Skjellerup
Charlotte Smith
Andrea Stafford
Barbara Stevenson
Deidre Swan
Ken Swan
Shane Tagg
Roxanne Taylor
Jenny Tubby
Kerry Thompson

Marketing & Communications Officer
Rachael Austin
(to 9 February 2012)

Marketing & Communications Manager
Kate Dezarnaulds
(from 26 March 2012)

Housekeepers
Carol Hunter
Oraphin Namek
Sandra Adams
(from 17 October 2011)
Barbara Smith
(to 30 September 2011)

Volunteers
Lynda Angell
Barbara Armitage
Adam Austin
Jennifer Austin
Neil Austin
Glenda Bahy
Linda Balding
Jim Bradley
Marion Bradley
Rosemary Brigden
Fran Collins
Helen Drury
Chloe Gibbon
Claire Gibbon
Bob Harnwell
Lyn Harnwell
Kathryn Hudson
Sue Irvin
Wendy Lindsay
Helen McCosker
Vicki McDonald
Chris Murphy
Annie Palmer
Christine Radywyl
Mark Rayment
Richard Skjellerup
Charlotte Smith
Andrea Stafford
Barbara Stevenson
Deidre Swan
Ken Swan
Shane Tagg
Roxanne Taylor
Jenny Tubby
Kerry Thompson

CONSULTANTS

Tony Ameneiro
Craig Burton – CAB Consulting
Jock Waugh
Ecological Farm Planning
Sue Feary and Heather Moorecroft
Tony Kay Pty Ltd
Rob Little Digital Images
Jane Smith – The Shiny Shiny World
Andrew McGahey – Total Earth Care
David Stein Conservation
Tonkin Zulaikha Greer
Total Earth Care
Fiona Winning

COMMITTEES

Audit Committee

Jenny Anderson
Chairman
Angela Clark
(to 6 December 2011)
Merran Dawson
(from 22 August 2011)
Cass O'Connor
(from 7 December 2011)

Artists in Residence Selection Committee

Geoff Ainsworth
Chairman and Board Representative
Kate Champion
Dancer/Choreographer
Paul Petran
Presenter ABC Radio
National, Music Deli
Anne Loxely
Curator, Museum of
Contemporary Art

Chip Rolley
Director Sydney Writers Festival
Virginia Baxter and Keith Gallasch
Publishers, Realtime Arts Magazine

Indigenous Arts Reference Group

Brook Andrew
Artist, Bundanon Alumnus
Garry Jones
Artist, Academic
Dr Anne Marshall
Social Anthropologist, Academic
Frances Rings
Dancer/Choreographer,
Bangarra Dance Theatre
Margaret Simoes
Aboriginal Community Development
Officer, Shoalhaven City Council



FINANCIAL REPORT 2012–13

BUNDANON TRUST
ABN 72 058 829 217

Financial Report
for the year ended 30 June 2012

Directors' Report	31
Independent Audit Report to the Members	37
Directors' Declaration	40
Statement of Comprehensive Income	41
Balance Sheet	42
Statement of Changes in Equity	43
Statement of Cash Flows	45
Notes to the Financial Statements	43
Additional information and declarations to be included under the <i>Charitable</i> <i>Fundraising Act (NSW) 1991</i>	60
Company Particulars	61

BUNDANON TRUST DIRECTOR'S REPORT

The Directors submit the Bundanon Trust's financial report for the financial year ended 30 June 2012.

DIRECTORS

The names of the Directors in office at the date of this report are Mr Shane Simpson (Chairman), Ms Jenny Anderson; Mr Geoff Ainsworth; Mr Simon Elliott; Mr Tony Emery; Mr Joe McIver; Ms Cass O'Connor; Professor Gerard Sutton and Mr Peter Watts.

PRINCIPAL ACTIVITIES

The principal activities of the Trust during the financial year were the promotion of the arts and the preservation of the natural and cultural heritage of the Bundanon properties.

RESULTS

The net operating result for the year ended 30 June 2012 was an approved deficit of \$34,292 compared with an approved deficit of \$120,378 for the 2011 financial year.

REVIEW OF OPERATIONS

In 2011-2012 Bundanon Trust provided access to the creative and educational opportunities of the Bundanon properties and collection and continued work to preserve the natural and cultural heritage of Bundanon.

The Trust conducted a comprehensive risk review that included the revision of current practices and procedures for effective fraud control.

THE TRUST HAS UNDERTAKEN THE FOLLOWING ACTIVITIES:

- A program of on-site activities, including concerts, talks and events, open days and educational and recreational tours which engage the public in the arts and encourage access to the Bundanon properties.
- An artists in residence program that presents opportunities for serious creative endeavour by artists in all art forms whilst resident within the Bundanon properties. 307 artists and scholars were in residence. Partnerships with national arts companies were strengthened and links consolidated across the arts and sciences.
- An education program that provides the opportunity to extend the creative and educational potential of young people, and to compliment formal curricula. An expanded regional program; partnerships with nationally acclaimed artists and arts companies and special programs for economically disadvantaged communities and those with disabilities were a feature of this year.
- Information and telecommunications systems were further strengthened preparing the Trust for the benefits of the National Broadband Network. Environmental management and a repositioning of the cattle enterprise was a high priority this year with significant planning undertaken and new alliances formed to advise on future implementation.
- The collections, land and buildings were revalued.
- The management and maintenance of the collections, in accordance with the Trust's collection policy, and access to the collections through exhibitions and research. Bundanon's major travelling exhibition of Boyd ceramics completed the third year of its three year national tour and was seen in venues across NSW and Tasmania.
- The company continued to attract funding from A RANGE OF Federal programs, State Government, community organisations, bequests, trusts and foundations and individual donors.

GOVERNANCE AND MANAGEMENT

Ms Cass O'Connor, was appointed to the Board on 7 December 2011.

Mr Joe McIver, was appointed to the Board on 31 January 2012

Mr Richard Morecroft resigned from the Board, due to other commitments, on 5 November 2011 after almost six years of committed service to Bundanon Trust.

Ms Angela Clark's term on the Board ceased on 6 December 2011 after three years of committed service to Bundanon Trust.

Ms Polly Boyd's term on the Board ceased on 6 December 2011 after eighteen and a half years of committed service to Bundanon Trust.

Merran Dawson, Senior Partner, PwC, joined the Audit and Risk Committee as an external member.

The Artists in Residence Committee (Chaired by Mr Geoffrey Ainsworth) provided an invaluable service to this program.

Director Jenny Anderson remained in the position of Chairman of the Audit and Risk Committee. The Audit and Risk Committee met three times during the reporting period.

The Directors of the Board serve part-time and receive no remuneration for their services. They give generously of their time and expertise to assist in the development of Bundanon.

MINISTERIAL DIRECTIONS

Under section 43 of the Commonwealth Authorities and Companies Act 1997 (CAC Act), the portfolio Ministers may notify the directors of a Commonwealth company of general policies of the Government that are to apply to the company. Consultation must take place prior to notification of these policies.

There have been no notifications under Section 43 of the CAC Act this year.

INDEMNITIES AND INSURANCE PREMIUMS

Indemnity is provided to directors of the Board under the coverage of the Bundanon Trust's insurer, Comcover, which is an Australian Government self-managed fund for insurable risk. Premiums are levied as part of the overall insurance coverage and are based on the agreed insurance value and previous claims history.

COMMONWEALTH DISABILITY STRATEGY

The Bundanon Trust has a continuing commitment to implementing the Australian Government's disability strategy.

SIGNIFICANT CHANGES IN THE STATE OF AFFAIRS

There were no significant changes in the state of affairs of the Trust during the year.

MATTERS SUBSEQUENT TO THE END OF THE FINANCIAL PERIOD

At the date of this report no matter or circumstance has arisen since 30 June 2012 that has significantly affected or may significantly affect the operations of the Trust, the results of the operations or the state of affairs of the Trust.

LIKELY DEVELOPMENTS

As at 30 June 2012 no likely developments were identified.

MEETINGS OF DIRECTORS

There were 4 meetings of the Board in the year ended 30 June 2012. Information concerning the terms of appointment of all directors who served during the year, the number of Board meetings each was eligible to attend and the number attended follows.

Director	Date of Appointment	Meetings eligible	Meetings Attended
Directors at the time of this report			
Mr Shane Simpson (Chair)	05.01.2011	4	4
Ms Jenny Anderson	05.03.2008	4	4
Mr Geoff Ainsworth	10.10.2008	4	3
Ms Polly Boyd	07.12.2008	2	0
Ms Angela Clark	07.12.2008	2	2
Mr Simon Elliott	10.10.2008	4	3
Mr Tony Emery	05.05.2009	4	4
Mr Richard Morecroft	31.01.2006	2	0
Mr Gerard Sutton	05.01.2011	4	3
Mr Peter Watts	05.01.2009	4	4
MS Cass OConnor	07.12.2011	2	2
Mr Joe Mclver	31.01.2012	2	2

Directors who held office but resigned or term lapsed

Information on directors	Date of Appointment	Date of Resignation
Polly Boyd	22.03.1993	06.12.2011
Angela Clark	07.12.2008	06.12.2011
Richard Morecroft	31.01.2006	05.11.2011

Information concerning the Directors in office at the date of this report follows.

Director	Experience
Mr Shane Simpson AM (Chairman)	Mr Shane Simpson AM is Special Counsel at Simpsons Solicitors. He is on the Council of the Australian National Maritime Museum, Chairman of the Peggy Glanville-Hicks Composers' House Trust, Chairman of the Advisory Council of the College of Fine Arts UNSW, and a director of the Australian National Academy of Music, the UNSW Foundation and the Luca and Anita Belgiono-Nettis Foundation. He is the author of many books including Collections Law: Legal Issues for Australian Archives, Galleries, Libraries and Museums.
Ms Jenny Anderson	Ms Jenny Anderson is an experienced Senior Executive Officer within the Australian Public Service. Jenny previously held senior positions in the Department of the Environment, Water, Heritage and the Arts, Department of Communications, Information Technology and the Arts, National Archives of Australia and on the staff of former Prime Minister, The Hon John Howard AC, from 1997 – 2003. She currently holds the position Director of the Museum of Australian Democracy at Old Parliament House.

Mr Geoff Ainsworth AM is a Sydney based businessman. He is a director of a number of companies, including Benthic Geotech Pty Limited, and is a Fellow of the Australian Institute of Company Directors. He is a Trustee of the Art Gallery of New South Wales, a member of the Sydney Symphony Council and a past member of the Venice Biennale Commissioners Council.

Mr Simon Elliott is the Assistant Director, Curatorial and Educational Services at the National Gallery of Australia, Canberra and former Assistant Director of the National Portrait Gallery. He holds a Bachelor of Arts (Hons) which he combines with a Masters of Business Administration.

Mr Tony Emery is a Managing Director of Soilco. He received the 2007 Award for Leadership on recycled organics from his industry peers. Tony is currently an executive member of the Shoal haven and Illawarra Business Chambers.

PMr Joe Mclver manages Education Solutions for Cisco Systems across Asia Pacific. Joe has a total of 17 years in ICT industry, including 12 years within the education sector. He has also served as an elected board member of CAUDIT (Council of Australian University Directors IT) and currently serves as a director on the board of CEDARS Christian College (K-12) in Wollongong. Joe holds a Bachelors Degree in Information Technology and a Masters of Business Administration.

Cass O'Connor has spent over 20 years as corporate advisor, investor and analyst, mostly focusing on the communications, media and entertainment industries. Cass is currently a director of a number of private entities including Goalpost Pictures, The Loop, and McGrath Limited. In her corporate advisory roles, Cass has been a director with Carnegie, Wylie & Company (now Lizard Australia); Executive Director with Goldman Sachs Australia LLC; Executive Director of Turnbull & Partners Limited and equities research analyst with Bain & Company (now Deutsche Bank).

Professor Gerard Sutton AO was the Vice-Chancellor of the University of Wollongong from 1995 to 2011. Professor Sutton was awarded an Officer of the Order of Australia (AO) in 2008. His other awards include the Royal Australian Navy Postgraduate Scholarship in 1972, an Emeritus Professorship from UTS in 1990 and the Australian Centenary Medal in 2001 for his contributions to education. Professor Sutton was Chair of Universities Australia from 22/5/07-31/12/07 and President of the Australian Vice-Chancellors' Committee from 1/1/06 until 22/5/07. He was a member of the Prime Minister's Science, Engineering & Innovation Council from 1/1/06 to 31/12/07. Professor Sutton is currently the Chair of AARNET board.

Mr Peter Watts AM is an architect and landscape architect and was the inaugural Director for the Historic Houses Trust of NSW, a position he held for 27 years until 2008. He is Chair of the National Art School in Sydney and Chair of The Johnston Collection in Melbourne and is a member of the Official Establishments Trust. Mr Watts is a Member of the Order of Australia and received the Royal Australian Institute of Architects Presidents Prize for "Outstanding Contribution to Architecture" in 2008.

Information on company secretary

Company Secretary

Experience

Mr Richard Montgomery Mr Montgomery was appointed Company Secretary on 21 May 2009 and is the Chief Operating Officer for Bundanon Trust. In 2001 he was awarded the Australian Centenary Medal for his contributions to the Centenary of Federation civic celebrations. He has worked as an Operations Manager for the Sydney Opera House, CarriageWorks, Sydney and the Bell Shakespeare Company.

Signed in accordance with a resolution of the Board of Directors:



Chairman
Mr Shane Simpson

Dated this 7 September 2012



INDEPENDENT AUDITOR'S REPORT

To the members of the Bundanon Trust

I have audited the accompanying financial report of the Bundanon Trust, which comprises the Balance Sheet as at 30 June 2012, the Statement of Comprehensive Income, Statement of Changes in Equity and Statement of Cash Flows for the year then ended, Notes comprising a Summary of Significant Accounting Policies and other explanatory information, and the Directors' Declaration.

Directors' Responsibility for the Financial Report

The directors of the Bundanon Trust are responsible for the preparation of the financial report that gives a true and fair view in accordance with Australian Accounting Standards and the *Corporations Act 2001* and for such internal control as is necessary to enable the preparation of the financial report that gives a true and fair view and is free from material misstatement, whether due to fraud or error.

Auditor's Responsibility

My responsibility is to express an opinion on the financial report based on my audit. I have conducted my audit in accordance with the Australian National Audit Office Auditing Standards, which incorporate the Australian Auditing Standards. These Auditing Standards require that I comply with relevant ethical requirements relating to audit engagements and plan and perform the audit to obtain reasonable assurance about whether the financial report is free from material misstatement.

An audit involves performing procedures to obtain audit evidence about the amounts and disclosures in the financial report. The procedures selected depend on the auditor's judgement, including the assessment of the risks of material misstatement of the financial report, whether due to fraud or error. In making those risk assessments, the auditor considers internal control relevant to the Bundanon Trust's preparation of the financial report that gives a true and fair view in order to design audit procedures that are appropriate in the circumstances, but not for the purpose of expressing an opinion on the effectiveness of the Bundanon Trust's internal control. An audit also includes evaluating the appropriateness of the accounting policies used and the reasonableness of accounting estimates made by the directors, as well as evaluating the overall presentation of the financial report.

I believe that the audit evidence I have obtained is sufficient and appropriate to provide a basis for my audit opinion.

GPO Box 707 CANBERRA ACT 2601
19 National Circuit BARTON ACT 2600
Phone (02) 6203 7300 Fax (02) 6203 7777

Independence

In conducting my audit, I have complied with the independence requirements of the *Corporations Act 2001*.

Opinion

In my opinion the financial report of the Bundanon Trust is in accordance with the *Corporations Act 2001*, including:

- (i) giving a true and fair view of the Bundanon Trust's financial position as at 30 June 2012 and of its performance for the year ended on that date; and
- (ii) complying with Australian Accounting Standards and the *Corporations Regulations 2001*.

Australian National Audit Office



Ron Wah
Audit Principal

Delegate of the Auditor-General

Canberra
7 September 2012



Mr Shane Simpson
Chairman
Bundanon Trust
PO Box 3343
NORTH NOWRA NSW 2541

Dear Mr Simpson

**BUNDANON TRUST
2011-12 FINANCIAL REPORT
AUDITOR'S INDEPENDENCE DECLARATION**

In relation to my audit of the financial report of the Bundanon Trust for the year ended 30 June 2012, to the best of my knowledge and belief, there have been:

- (i) no contraventions of the auditor independence requirements of the *Corporations Act 2001*; and
- (ii) no contravention of any applicable code of professional conduct.

Australian National Audit Office



Ron Wah
Audit Principal

Delegate of the Auditor-General

Canberra
7 September 2012

GPO Box 707 CANBERRA ACT 2601
19 National Circuit BARTON ACT 2600
Phone (02) 6203 7300 Fax (02) 6203 7777

Bundanon Trust

Directors' Declaration

For the period ended 30 June 2012

The directors of Bundanon Trust declare that:

- the financial statements and notes, as set out on pages 45 to 49, are in accordance with the Corporations Act 2001 and:
 - comply with Accounting Standards and the Corporations Regulations 2001; and
 - give a true and fair view of the financial position of the company as at 30 June 2012 and of the performance for the year ended on that date of the company.
- in the directors' opinion there are reasonable grounds to believe that the company will be able to pay its debts as and when they become due and payable.

This declaration is made in accordance with a resolution of the Board of Directors.



Mr Shane Simpson - Chairman

Dated this 7 September 2012

Bundanon Trust Statement of Comprehensive Income for the year ended 30 June 2012

	Notes	2012 \$	2011 \$
Classification by function:			
Revenue			
Own-source revenues			
Program		109,258	166,684
Education		372,494	341,674
Collection		222,234	172,277
Property Management	4a	63,268	19,516
Operations	4a	101,990	141,300
Other Income	4a	60,072	80,837
Total own-source revenues		<u>929,316</u>	<u>922,288</u>
Funding	4b	1,578,000	1,555,000
Total revenues		<u>2,507,316</u>	<u>2,477,288</u>
Expenses			
Program		217,895	317,402
Education		380,697	332,059
Collection		487,063	460,442
Property Management		588,904	485,133
Operations		866,919	998,431
Other Expenses	4c	130	4,199
Total expenses	4d	<u>2,541,608</u>	<u>2,597,666</u>
Operating Deficit		<u>(34,292)</u>	<u>(120,378)</u>
Other comprehensive income			
Changes in Collection revaluation reserves		4,631,843	-
Changes in property revaluation reserves		(476,396)	-
Gains/(losses) on available-for-sale financial assets	8	<u>(13,855)</u>	<u>2,438</u>
Total other comprehensive income		<u>4,141,592</u>	<u>2,438</u>
Total changes in equity other than those resulting from transactions with owners as owners		<u>4,107,300</u>	<u>(117,940)</u>

The above statement should be read in conjunction with the accompanying notes

Bundanon Trust
Balance Sheet
As at 30 June 2012

	Notes	2012 \$	2011 \$
ASSETS			
Financial Assets			
Cash and cash equivalents	6	539,812	568,326
Trade and other receivables	7	111,064	50,320
Available-for-sale financial assets	8	642,505	663,619
Other	9	35,583	21,074
Total financial assets		1,328,964	1,303,339
Non-Financial Assets			
Collection	10	23,209,625	18,644,528
Land and buildings	11	11,607,572	12,142,280
Plant and equipment	12	526,668	537,022
Inventories	13	44,979	49,913
Biological assets	14	48,900	40,830
Intangible Assets		29,143	3,000
Total non-financial assets		35,466,887	31,417,573
Total Assets		36,795,851	32,720,912
LIABILITIES			
Payables			
Suppliers and other payables	15	598,123	633,130
Total payables		598,123	633,130
Provisions			
Employee provisions	16	138,086	135,440
Total provisions		138,086	135,440
Total Liabilities		736,209	768,570
Net Assets		36,059,642	31,952,342
EQUITY			
Contributed equity		22,460,091	18,318,499
Reserves		13,599,551	13,633,843
Retained surplus		13,599,551	13,633,843
Total Equity		36,059,642	31,952,342

The above statement should be read in conjunction with the accompanying notes.

Bundanon Trust
Statement of changes in Equity
for the year ended 30 June 2012

	Retained surplus		Collection revaluation reserve		Land and buildings revaluation reserve		Available-for-sale financial assets revaluation reserve		Total equity	
	2012 \$	2011 \$	2012 \$	2011 \$	2012 \$	2011 \$	2012 \$	2011 \$	2012 \$	2011 \$
Opening balance	13,633,843	13,754,221	11,802,428	11,802,428	6,490,417	6,490,417	25,654	-	31,952,342	32,047,066
Balance carried forward		13,754,221		11,802,428		6,490,417		-		32,047,066
Opening balance	13,633,843	13,754,221	11,802,428	11,802,428	6,490,417	6,490,417	25,654	-	31,952,342	32,047,066
Comprehensive Income	-	-	4,631,843	-	(476,396)	-	(13,855)	25,654	4,141,592	25,654
Other comprehensive income			4,631,843	-	(476,396)	-	(13,855)	25,654	4,141,592	25,654
Deficit for the year	(34,292)	(120,378)	-	-	-	-	-	-	(34,292)	(120,378)
Total comprehensive income	(34,292)	(120,378)	4,631,843	-	(476,396)	-	(13,855)	25,654	4,107,300	(94,724)
Closing balance as at 30 June	13,599,551	13,633,843	16,434,271	11,802,428	6,014,021	6,490,417	11,799	25,654	36,059,642	31,952,342

The above statement should be read in conjunction with the accompanying notes.

Bundanon Trust
STATEMENT OF CASH FLOWS
for the year ended 30 June 2012

	Notes	2012 \$	2011 \$
OPERATING ACTIVITIES			
Cash flows from operating activities			
Receipts from customers		993,710	801,820
Receipts from funding		1,578,000	1,555,000
Interest		20,026	24,741
Investment income		31,147	25,533
Payments to suppliers and employees		(2,450,217)	(2,101,821)
Net GST received		24,635	-
Other		-	(1,797)
Net cash from operating activities	18	<u>197,301</u>	<u>303,476</u>
INVESTING ACTIVITIES			
Cash flows from investing activities			
Proceeds from sales of property, plant and equipment		36,364	51,363
Proceeds from sales of available-for-sale financial assets		35,213	179,982
Purchase of property, plant and equipment		(257,689)	(234,582)
Purchase of intangibles		(26,930)	-
Purchase of available-for-sale financial assets		(29,000)	(218,855)
Other		16,227	(13,990)
Net cash used by investing activities		<u>(225,815)</u>	<u>(236,082)</u>
Net increase (decrease) in cash held		<u>(28,514)</u>	<u>67,394</u>
Cash and cash equivalents at the beginning of the reporting period		568,326	500,932
Cash and cash equivalents at the end of the reporting period	6	<u>539,812</u>	<u>568,326</u>

The above statement should be read in conjunction with the accompanying notes.

Bundanon Trust
Notes to the financial statements
For the year ended 30 June 2012

Note 1: a) Basis of preparation

The financial report is a general purpose financial statement that has been prepared in accordance with Australian Accounting Standards, including Australian Accounting Interpretations, other authoritative pronouncements of the Australian Accounting Standards Board and the Corporations Act 2001.

The Directors have resolved in accordance with AASB 101 that given the "not for profit" nature of the company, the term "Operating surplus and deficit" will be adopted rather than "Profit and loss".

b) Basis of measurement

The financial report has also been prepared on an accrual basis and is based on historical costs, except for the Bundanon collection and land and buildings which have been measured at fair value. Changes in fair values of these assets have been dealt with directly in equity. Available-for-sale financial assets have been measured at fair value but where there has been objective evidence that the asset is impaired, the cumulative loss in equity is removed from equity and recognised in the income statement.

c) Use of estimates and judgements

No accounting assumptions or estimates have been identified that have a significant risk of causing a material adjustment to carrying amounts of assets and liabilities within the next accounting period.

The following is a summary of the material accounting policies adopted by the Trust in the preparation of the financial report:

Note 2: Summary of significant accounting policies

The accounting policies set out below have been applied consistently to all periods presented in these financial statements.

a) Taxation matters

(i) Bundanon Trust is a non-profit organisation established for the promotion of the arts and is exempt from income tax pursuant to Section 50-5 of the Income Tax Assessment Act, 1997.

(ii) As a public art gallery approved by the Australian Taxation Office under Division 30 of the Income Tax Assessment Act, 1997, Bundanon Trust is entitled to receive gifts of the value of \$2 and upwards of money or of property other than money from donors who may claim a taxation deduction under Section 82KH (1) of the Income Tax Assessment Act.

(iii) As an organisation listed on the Register of Cultural Organisations administered by the Department of Regional Australia, Local Government, Arts and Sport, gifts of money to Bundanon Trust's Cultural Fund are tax deductible pursuant to Division 30-100 of the Income Tax Assessment Act.

Note 2: Summary of significant accounting policies continued

b) Inventories

Merchandising

Inventories are measured at the lower of cost or net realisable value. Costs are assigned on a first-in first-out basis. A provision for obsolete stock is made when it is deemed there are excessive levels of individual stock lines.

c) Biological Assets - Livestock

Livestock is measured at net realisable value.

d) Property, plant and equipment

Property, plant and equipment

Each class of property, plant and equipment is carried at cost or fair value less, where applicable, any accumulated depreciation.

Property

Freehold land, land improvements and buildings are measured on the fair value basis, being the amount for which an asset could be exchanged between knowledgeable willing parties in an arm's length transaction. It is the policy of the Trust to have an independent valuation every three years, with annual appraisals being made by the directors.

Plant and equipment

The carrying amount of plant and equipment is reviewed annually by directors to ensure it is not in excess of the recoverable amount from these assets. The recoverable amount is assessed on the basis of the expected net cash flows, which will be received from the assets employed and subsequent disposal. The expected net cash flows have not been discounted to present values in determining the recoverable amounts.

Depreciation

The depreciable amounts of all buildings and plant and equipment, but excluding freehold land and historic buildings, are depreciated on a diminishing value basis over their useful lives commencing from the time the asset is held ready for use.

The depreciation rates used for each class of depreciable assets are:

Class of fixed asset	Depreciation rate	
	2012	2011
Buildings	2%-10%	2%-10%
Plant and Equipment	5%-60%	5%-60%
Leased Plant and Equipment	22.50%	22.50%

Note 2: Summary of significant accounting policies continued

e) Other financial assets

Other financial assets represent the balance of capital funds provided by the Australian Government on the formation of the Trust. The purpose of the funds is to provide an investment income to provide for the ongoing management of Trust assets.

These assets comprise cash on short-term deposit and listed investments. These assets are recorded at cost and subsequently revalued at fair value.

The assets cannot be drawn down to fund the ongoing operations of the Trust without prior ministerial approval.

f) Bundanon Collection

The valuation of Bundanon collection artworks as at 30 June 2012 is based on advice received from Simon Storey, MAVAA.

Depreciation of the Bundanon collection

Depreciation of the collection is provided on a straight-line basis over the estimated useful life of the asset.

Major depreciation periods are:	2012	2011
Paintings, prints, drawings & ceramics	50-500 years	50-500 years
Furniture and furnishings	75 years	75 years
Rugs & carpets	25-100 years	25-100 years
Photographs, documents, etc	75 years	75 years

g) Cash

For the purposes of the statement of cash flows, cash includes deposits at call that are readily convertible to cash on hand.

h) Comparative Figures

Where required comparative figures have been reclassified for consistency with current year disclosures.

i) Revenue

Revenue from the provision of services or the sale of goods is recognised upon the delivery of the services or goods to customers.

Interest revenue and income received from available-for-sale investments is recognised as received.

Grant revenue is recognised after the conditions associated with the grant are met.

All revenue is stated net of the amount of goods and services tax (GST).

Note 2: Summary of significant accounting policies continued

j) Financial Assets

The Trust classifies its financial assets in the following categories:

- 'available-for-sale' financial assets, and
- 'loans and receivables'.

The classification depends on the nature and purpose of the financial assets and is determined at the time of initial recognition.

Financial assets are recognised and derecognised upon 'trade date'.

Available-for-sale financial assets

Available-for-sale financial assets are non-derivatives that are either designated in this category or not classified in any of the other categories. They are included in non-current assets unless management intends to dispose of the asset within 12 months of the balance sheet date.

Available-for-sale financial assets are recorded at fair value. Gains and losses arising from changes in fair value are recognised directly in the reserves (equity) with the exception of impairment losses.

Where a reliable fair value can not be established for unlisted investments in equity instruments cost is used. The Trust has no such instruments.

Loans and receivables

Trade receivables, loans and other receivables that have fixed or determinable payments that are not quoted in an active market are classified as 'loans and receivables'. They are included in current assets, except for maturities greater than 12 months after the balance sheet date. These are classified as non current assets.

Impairment of financial assets

Financial assets are assessed for impairment at each balance date.

- Available for sale financial assets - If there is objective evidence that an impairment loss on an available for sale financial asset has been incurred, the amount of the difference between its cost, less principal repayments and amortisation, and its current fair value, less any impairment loss previously recognised in expenses, is transferred from equity to the Income Statement.
- Financial assets held at amortised cost - If there is objective evidence that an impairment loss has been incurred for loans and receivables held at amortised cost, the amount of the loss is measured as the difference between the asset's carrying amount and the present value of estimated future cash flows discounted at the asset's original effective interest rate. The carrying amount is reduced by way of an allowance account. The loss is recognised in the Income Statement.

Note 2: Summary of significant accounting policies continued

k) Financial Liabilities

Financial liabilities are classified as other financial liabilities.
Financial liabilities are recognised and derecognised upon 'trade date'.

Other financial liabilities

Other financial liabilities, including borrowings, are measured at amortised cost.

Supplier and other payables

Supplier and other payables are recognised at cost. Liabilities are recognised to the extent that the goods or services have been received (and irrespective of having been invoiced).

l) Changes in Australian Accounting Standards

Adoption of new Australian Accounting Standards requirements

No accounting standard has been adopted earlier than the application date as stated in the standard. No new accounting standards, amendments to standards and interpretations issued by the Australian Accounting Standards Board that are applicable in the current period have had a material financial affect on the Trust.

Future Australian Accounting Standard requirements

New standards, amendments to standards, and interpretations that are applicable to future periods have been issued by the Australian Accounting Standards Board. It is estimated that adopting these pronouncements, when effective, will have no material impact on future reporting periods.

Note 3: Members guarantee and government support

Bundanon Trust is a public company limited by guarantee. The constitution provides that:

"Every member of the Company undertakes to contribute to the property of the Company in the event of the same being wound up while he is a member, or within one year after he ceases to be a member, for payment of debts and liabilities of the Company (contracted before he ceases to be a member) and of the costs, charges and expenses of winding up and for the adjustment of the rights of the contributories among themselves, such amount as may be required, not exceeding one hundred dollars (\$100)."

The Bundanon Trust is dependent on the Australian Government's ongoing support. The Australian Government has confirmed funding of \$6.558 million, commencing 1 July 2011 for four years until 30 June 2015, to support the operations of the Bundanon Trust.

Bundanon Trust
Notes to the financial statements continued
For the year ended 30 June 2012

	2012	2011
	\$	\$
Note 4: Deficit from ordinary activities		
(a) Revenue		
Property management		
- Net realised gain on cattle	13,980	19,516
- Government Funding	49,288	-
	<u>63,268</u>	<u>19,516</u>
Operations		
- Merchandise	12,984	11,129
- Sponsorship and Donations	6,734	36,132
- Venue hire	76,687	71,063
- Other	5,585	22,976
	<u>101,990</u>	<u>141,300</u>
Other		
- Interest income	20,026	24,741
- Income received from listed/non-listed investments	31,147	25,533
- Profit on sale of available-for-sale financial asset	1,378	14,951
- Other	7,521	15,612
	<u>60,072</u>	<u>80,837</u>
(b) Funding		
Office For the Arts	<u>1,578,000</u>	<u>1,555,000</u>
(c) Other Expenses		
- Net loss on sale of available-for-sale financial assets	<u>130</u>	<u>4,199</u>
(d) Expenses		
Depreciation and amortisation		
- Collection	110,376	110,244
- buildings at valuation	99,929	100,684
- freehold land improvements	34,645	34,930
- plant and equipment	122,644	106,033
- intangibles	786	-
Net depreciation and amortisation expense	<u>368,380</u>	<u>351,891</u>
(e) Employee expenses	<u>1,236,924</u>	<u>1,272,722</u>
Note 5: Auditors remuneration		
- Audit of financial report	24,000	24,000
Note 6: Cash and cash equivalent - financial assets		
Cash at bank	539,112	567,576
Cash on hand	700	750
	<u>539,812</u>	<u>568,326</u>

The above figures are reconciled to cash at the end of the financial period as shown in the cash flow statement.

Bundanon Trust
Notes to the financial statements continued
For the year ended 30 June 2012

	2012	2011
	\$	\$
Note 7: Trade and other receivables - financial assets		
Trade receivables	92,221	42,489
Other receivables	18,843	7,831
	<u>111,064</u>	<u>50,320</u>

Receivables are expected to be recovered in no more than 12 months.

Note 8: Available-for-sale financial assets - financial assets

Opening value of available-for-sale financial assets	663,619	609,262
Disposal of available-for-sale financial assets	(33,966)	(169,229)
Purchase of available-for-sale financial assets	29,000	218,855
Gains on available for sale financial assets	(13,855)	2,438
Receipt of unsettled trades	(2,293)	2,293
	<u>642,505</u>	<u>663,619</u>

Market value of units in equity trusts as at 30 June 2012

	Units held	Market Price	Market Value
		\$	\$
Ausbil Inv Trust Aust Active Equity Fund	34,917	2.3791	83,072
APN Property For Income Fund No 2	28,549	0.8059	23,007
APN AREIT Fund (APN 0008AU)	37,345	1.2014	44,866
Australian Unity Wholesale High Yield Mortgage Trust	20,347	1.0034	20,416
Challenger Howard Wholesale Mortgage Fund	7,832	1.0020	7,847
Walter Scott Global Equity Fund	64,204	1.0984	70,521
Arrowstreet Global Equity Fund	90,381	0.7295	65,933
BT Wholesale Core Australian Share Fund	50,358	1.6861	84,909
UBS Diversified Fixed Income Fund	130,985	0.8953	117,271
Schroder Fixed Income Fund	109,047	1.1432	124,663
			<u>642,505</u>

Market value of units in equity trusts as at 30 June 2011

	Units held	Market Price	Market Value
		\$	\$
Ausbil Inv Trust Aust Active Equity Fund	34,917	2.7233	95,089
APN Property For Income Fund No 2	32,150	0.8055	25,897
APN AREIT Fund (APN 0008AU)	37,345	1.1823	44,153
Australian Unity Wholesale High Yield Mortgage Trust	31,011	1.0031	31,107
Challenger Howard Wholesale Mortgage Fund	29,606	1.0050	29,754
Walter Scott Global Equity Fund	64,204	1.0628	68,236
Arrowstreet Global Equity Fund	90,381	0.7589	68,590
BT Wholesale Core Australian Share Fund	50,358	1.8895	95,151
UBS Diversified Fixed Income Fund	117,141	0.8594	100,671
Schroder Fixed Income Fund	93,479	1.0984	102,677
			<u>661,326</u>
Pending Settlements			2,293
			<u>663,619</u>

Available-for-sale financial assets have been measured at fair value and where there has been objective evidence that the

Bundanon Trust
Notes to the financial statements continued
For the year ended 30 June 2012

	2012 \$	2011 \$
Note 9: Other - financial assets		
Other	9,666	6,340
Net GST Refundable	25,917	14,734
	<u>35,583</u>	<u>21,074</u>

Note 10: Bundanon Collection - non-financial Assets

Paintings, prints, drawings & ceramics at fair value (a)	22,679,625	18,374,035
Other (a)		
- Furniture and furnishings at fair value	223,000	136,805
- Rugs & carpets at fair value	94,000	44,352
- Photographs, documents, etc at fair value	150,000	89,336
- Book libraries	63,000	-
Balance at the end of the year	<u>23,209,625</u>	<u>18,644,528</u>

Movements in carrying amounts during the year

Balance at the beginning of the year	18,644,528	18,721,904
Revaluation	4,268,559	-
Additions	43,630	32,866
Depreciation	(110,376)	(110,242)
Write back of depreciation on asset revaluation	363,284	-
Balance at the end of the year	<u>23,209,625</u>	<u>18,644,528</u>

a) The valuation of paintings, prints, drawings & ceramics was made by the directors in office at 30 June 2012 in consultation with Simon Storey, MAVAA. The directors declare they are satisfied there has been no material change to these valuations.

Bundanon Trust
Notes to the financial statements continued
For the year ended 30 June 2012

Note 11: Land and buildings - non-financial assets

	2012 \$	2011 \$
Land and Freehold Improvements		
Freehold land at fair value (i)	5,252,237	5,837,791
Freehold land improvements at cost (i)	645,490	799,789
Less accumulated depreciation	(7,370)	(60,020)
Total Land and Freehold Improvements	<u>5,890,357</u>	<u>6,577,560</u>
Buildings		
Heritage buildings at fair value (i)	610,000	585,001
Non-Heritage buildings at fair value (i)	5,132,815	5,181,767
Less accumulated depreciation	(25,600)	(202,048)
	<u>5,717,215</u>	<u>5,564,720</u>
Total Land and buildings	<u>11,607,572</u>	<u>12,142,280</u>

(i) On 5 March 2012 the directors adopted the independent valuation at market value of freehold land, buildings and land improvements conducted by John W Austin, FAPI, Director Walsh & Monaghan (Nowra) Pty Ltd.

Movements in carrying amounts during the year 2012

	Freehold Land \$	Freehold land improvements \$	Buildings at valuation \$	Total \$
Balance at 1 July 2011	5,837,791	739,769	5,564,720	12,142,280
Revaluation	(585,554)	(42,945)	523,202	(105,297)
Additions	-	76,807	10,966	87,773
Disposals	-	(9,609)	-	(9,609)
Depreciation	-	(34,646)	(99,941)	(134,587)
Write back of depreciation on asset revaluation	-	(91,256)	(281,732)	(372,988)
Balance at 30 June 2012	<u>5,252,237</u>	<u>638,120</u>	<u>5,717,215</u>	<u>11,607,572</u>

Movements in carrying amounts during the year 2011

	Freehold Land \$	Freehold land improvements \$	Buildings at valuation \$	Total \$
Balance at 1 July 2010	5,837,791	728,339	5,665,404	12,231,534
Additions	-	46,360	-	46,360
Depreciation	-	(34,930)	(100,684)	(135,614)
Balance at 30 June 2011	<u>5,837,791</u>	<u>739,769</u>	<u>5,564,720</u>	<u>12,142,280</u>

Bundanon Trust
Notes to the financial statements continued
For the year ended 30 June 2012

Note 12: Plant and equipment - non-financial assets

	2012	2011
	\$	\$
Plant & equipment		
Plant & equipment at cost	1,005,832	1,040,494
Less accumulated depreciation	(479,164)	(503,472)
	<u>526,668</u>	<u>537,022</u>

Movements in carrying amounts during the year 2012

	Plant and Equipment	Total \$
Balance at 1 July 2011	537,022	537,022
Additions	169,474	169,474
Disposals	(67,807)	(67,807)
Write back of depreciation on asset disposal	10,623	10,623
Depreciation	(122,644)	(122,644)
Balance at 30 June 2012	<u>526,668</u>	<u>526,668</u>

Movements in carrying amounts during the year 2011

	Plant and Equipment	Total \$
Balance at 1 July 2010	481,858	481,858
Additions	185,222	185,222
Disposals	(51,363)	(51,363)
Write back of depreciation on asset disposal	27,340	27,340
Depreciation	(106,035)	(106,035)
Balance at 30 June 2011	<u>537,022</u>	<u>537,022</u>

Note 13: Inventories - non-financial assets

	2012	2011
	\$	\$
Merchandise		
Merchandising goods at cost	47,286	50,086
Less provision for obsolete stock	(4,674)	(2,800)
	<u>42,612</u>	<u>47,286</u>
Event Stocks	2,367	2,627
Balance at 30 June 2012	<u>44,979</u>	<u>49,913</u>

Bundanon Trust
Notes to the financial statements continued
For the year ended 30 June 2012

Note 14: Biological assets - non financial assets

Bundanon Trust has a herd of commercial Angus crossbred cattle located at the Bundanon and Earie Park properties. The fair value of cattle at the end of the period has been estimated based on recent sales data.

Reconciliation of changes in cattle carrying amounts	2012		2011	
	Quantity	\$	Quantity	\$
Opening stock at the beginning of the period	41	40,830	62	45,750
Add: Purchases	16	16,650		
Natural increase	28		22	-
Net realised and unrealised gain on cattle		13,980		19,516
Less: Sales	(28)	(22,560)	(43)	(24,436)
Deaths	(3)			-
Closing stock at the end of the period	<u>54</u>	<u>48,900</u>	<u>41</u>	<u>40,830</u>

Note 15: Suppliers and other payables - Payables

	2012	2011
	\$	\$
Suppliers and other payables		
Trade creditors	113,584	180,959
Sundry creditors and accrued expenses	108,907	125,526
Deposits, grants and donations in advance	375,632	326,645
	<u>598,123</u>	<u>633,130</u>

Current payables are expected to be settled within 12 months. Non-Current payables are expected to be settled in more than 12 months.

Note 16: Employee Provisions

Employee provisions	2012	2011
Provision for annual leave - Current	70,609	89,206
Provision for long service leave - Current	22,825	17,609
Provision for long service leave - Non-Current	44,652	28,625
	<u>138,086</u>	<u>135,440</u>

(a) Number of full time 9, part-time 8 and casual employees 13 at year-end. 30 29

Note 17: Related parties

Directors

The names of the persons who were directors of the Bundanon Trust during the period from 1 July 2011 to 30 June 2012 are as follows:

Mr Shane Simpson (Chairman), Ms Jenny Anderson, Mr Geoff Ainsworth, Ms Polly Boyd (resigned Dec 2011), Ms Angela Clark (resigned Dec 2011), Mr Simon Elliott, Mr Tony Emery, Mr Gerard Sutton, Mr Peter Watts, Mr Richard Morecroft (resigned Oct 2011), Ms Cass O'Connor (app Dec 2011), Mr Joe Mc Iver (app Jan 2012).

No director received remuneration from the Trust or any related corporation in relation to the management of the Trust.

Bundanon Trust
Notes to the financial statements continued
For the year ended 30 June 2012

Note 18: Reconciliation of operating deficit to net cash from operating activities	2012	2011
	\$	\$
Operating deficit	(34,292)	(120,378)
Non-cash flows included in operating deficit		
Depreciation	368,380	351,891
Donations - collection	(43,630)	(32,866)
Net Loss (Profit) on disposal of plant and equipment	18,840	(15,612)
Net Profit on sale of investments	(1,247)	(10,752)
Changes in assets and liabilities		
Decrease (Increase) in inventories	4,934	109
Decrease (Increase) in biological assets	(8,070)	4,920
Decrease (Increase) receivables	(60,744)	(17,308)
Decrease (Increase) in prepayments/other receivables	(14,509)	(18,997)
(Decrease) Increase in employee and other provisions	2,646	(6,453)
(Decrease) Increase in deposits in suppliers and other payables	(35,007)	168,922
Net cash from operating activities	197,301	303,476

Note 19: Financial instruments

Financial Risk Management Policies

The Trust's financial instruments consist mainly of deposits with banks, local money market instruments, short-term investments, loans & receivables, payables and other liabilities.

The Trust does not have any derivative instruments at 30 June 2012. (2011: Nil).

An audit committee consisting of senior committee members meet on a regular basis to analyse financial risk exposure and to evaluate treasury management strategies in the context of the most recent economic conditions and forecasts.

19a Categories of financial instruments

Financial Assets	2012	2011
	\$	\$
Loans and receivables:		
Cash	539,812	568,326
Receivables	111,064	50,320
	650,876	618,646
Available for sale financial assets:		
Listed investments at fair value (see note 8)	642,505	663,619
Carrying amount of financial assets	1,293,381	1,282,265
Financial Liabilities		
Other financial liabilities at amortised cost		
Payables	598,123	633,130
Carrying amount of financial liabilities	598,123	633,130

Bundanon Trust
Notes to the financial statements continued
For the year ended 30 June 2012

Note 19: Financial instruments continued

19b Net income and expense from financial assets	2012	2011
	\$	\$
Loans and receivables		
Interest revenue	20,026	24,741
Net gain from loans and receivables	20,026	24,741
Available for sale financial assets		
Dividend revenue	31,147	25,533
(Loss)/gain recognised in equity	(13,855)	2,438
Gain on disposal	1,248	10,752
Net gain from available for sale financial assets	18,540	38,723
Net gain from financial assets	38,566	63,464

19c Fair value of financial instruments

	Carrying amount 2012	Fair value 2012	Carrying amount 2011	Fair value 2011
	\$	\$	\$	\$
FINANCIAL ASSETS				
Cash	539,812	539,812	568,326	568,326
Receivables	111,064	111,064	50,320	50,320
Listed investments (available for sale)	642,505	642,505	663,619	663,619
Total	1,293,381	1,293,381	1,282,265	1,282,265
FINANCIAL LIABILITIES				
Payables	598,123	598,123	633,130	633,130
Total	598,123	598,123	633,130	633,130

Fair value measurements categorised by fair value hierarchy

The following table provides an analysis of financial instruments that are measured at fair value, by valuation method.

The different levels are defined below:

Level 1: Fair value obtained from unadjusted quoted prices in active markets for identical instruments

Level 2: Fair value derived from inputs other than quoted prices included within Level 1 that are observable for the instrument, either directly or indirectly.

Level 3: Fair value derived from inputs that are not based on observable market data.

Fair value hierarchy for financial assets

	Level 1		Total	
	2012	2011	2012	2011
	\$	\$	\$	\$
Financial assets at fair value				
Available for sale financial assets	642,505	663,619	642,505	663,619
Total	642,505	663,619	642,505	663,619

There was no transfer between levels.

Bundanon Trust
Notes to the financial statements continued
For the year ended 30 June 2012

Note 19: Financial instruments continued

19d Credit risk

The entity does not have any material credit risk exposure to any single receivable or group of receivables under financial instruments entered into by the entity.

There are no material amounts of collateral held as security at 30 June 2012.

Credit risk of financial instruments not past due or individually determined as impaired

	Not Past due nor impaired 2012	Not Past due nor impaired 2011
	\$	\$
Receivables	59,920	46,320
Total	59,920	46,320

Ageing of financial assets that are past due not impaired for 2012

	0 to 30 days	31 to 60 days	61 to 90 days	90+ days	Total
	\$	\$	\$	\$	\$
Receivables	47,423	1,400	2,321	0	51,144
Total	47,423	1,400	2,321	0	51,144

Ageing of financial assets that are past due not impaired for 2011

	0 to 30 days	31 to 60 days	61 to 90 days	90+ days	Total
	\$	\$	\$	\$	\$
Receivables	0	494	2,490	1,016	4,000
Total	0	494	2,490	1,016	4,000

19e Liquidity risk

The entity manages liquidity risk by monitoring forecast cash flows and ensuring that adequate unutilised borrowing facilities are maintained.

Maturities for financial liabilities 2012

	On demand	within 1 year	1 to 5 years	>5 years	Total
	\$	\$	\$	\$	\$
Payables	222,491	320,241	27,391	28,000	598,123
Total	222,491	320,241	27,391	28,000	598,123

Maturities for financial liabilities 2011

	On demand	within 1 year	1 to 5 years	>5 years	Total
	\$	\$	\$	\$	\$
Payables	303,130	233,000	48,000	49,000	633,130
Total	303,130	233,000	48,000	49,000	633,130

Bundanon Trust
Notes to the financial statements continued
For the year ended 30 June 2012

Note 19: Financial instruments continued

19f Market risk

The Trust holds basic financial instruments that do not expose the company to certain market risks. The Trust is not exposed to "currency" risk; however risks associated with "interest rates" and "price risk" are detailed below.

Interest Rate Risk

Financial Assets:

The Trust maintains operating bank accounts to manage cash. The operating bank accounts bear interest at an average rate of 4.35% (2011: 4.7%).

Price risk

The Trust's investment in available for sale financial assets is exposed to price risk which are subject to movements in the market. The risk is minimised by engagement of the Bundanon Trust Audit Committee to approve transactions presented by a financial investment advisor who has been approved by the Board; who also have directed that only good quality investments be considered.

Performance of available for sale financial assets are monitored by the Bundanon Trust Audit Committee and managed on the advice received by an investment advisor who has been engaged by agreement of the Bundanon Trust Board.

Available-for-sale financial assets have been measured at fair value and where there has been objective evidence that the asset is impaired, the cumulative loss in equity has been removed and recognised in the income statement. In 2012, \$13,855 decrease in fair value was transferred from reserves. In 2011, \$2,438 increase in fair value was transferred to reserves.

Note 20: Events after the reporting period

The directors are not aware of any significant events since the end of the reporting period.

Bundanon Trust
Additional information and declarations to be furnished under the Charitable Fundraising Act (New South Wales), 1991
For the period ended 30 June 2012

This page is included under the requirements of the Authority to Fundraise under the New South Wales Charitable Fundraising Act ("the Act").

Consistent with the meaning of the term "fundraising appeal" in the Act, all of the Trust's income producing activities, including entry fees for visits to the Bundanon properties, the sale of merchandise, income on investments, gifts, sponsorships and donations, and farming are, and are represented as being, directed to its "charitable" purposes and therefore constitute fundraising appeals.

Details of the Trust's income and expenditure and references to significant aspects of fundraising activities are included in Bundanon Trust's audited Annual Financial Reports.

Declaration by Chairman in respect of fundraising appeals

I, Shane Simpson, a director of Bundanon Trust declare that in my opinion:

- a) the accounts give a true and fair view of all income and expenditure of Bundanon Trust with respect to fundraising appeals; and
- b) the balance sheet gives a true and fair view of the state of affairs with respect to fundraising appeals; and
- c) the Bundanon Trust has complied with the provisions of the Charitable Fundraising Act and the Regulations under that Act and the conditions attached to the authority to the extent practicable and applicable; and
- d) the internal controls exercised by Bundanon Trust are appropriate and effective in accounting for all income received.



Mr Shane Simpson - Chairman

Dated this 7 September 2012

Bundanon Trust
Company Particulars

Directors

Mr Shane Simpson AM
Ms Jenny Anderson
Mr Geoff Ainsworth AM
Mr Joe McIver
Mr Simon Elliott
Mr Tony Emery
Mr Richard Morecroft
Ms Cass O'Connor
Prof. Gerard Sutton AO
Mr Peter Watts AM

Chief Executive Officer

Ms Deborah Ely

Company Secretary

Mr Richard Montgomery

Registered Office

The Arthur and Yvonne Boyd Education Centre
170 Riversdale Road
West Cambewarra NSW 2540
Telephone: (02) 4422 2100

Auditor

Australian National Audit Office
National Circuit
Barton ACT 2600

