

ARTS PROGRAM POLICY



BUNDANON





ARTS PROGRAM POLICY | July 2023

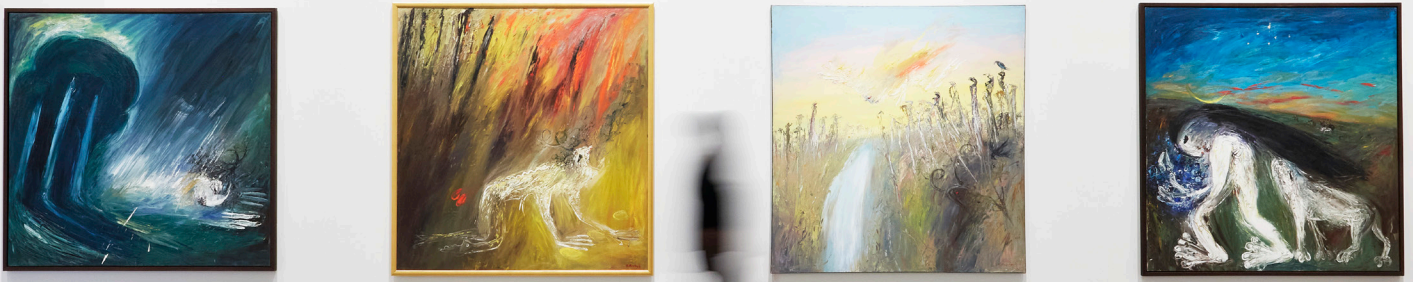
Bundanon was established with the aim of celebrating the importance and intrinsic value of the arts and natural environment in the lives of all Australians. Its constitution supports creative activities that advance education and understanding about artists and artforms, and which conserve cultural heritage for future generations.

Bundanon was gifted to the Australian people in 1993 by Arthur and Yvonne Boyd, and today forms one of this country's nine National Collecting Institutions. The Boyds envisaged Bundanon as a multidisciplinary creative space:

'a place for the community to enjoy the bush and the river, and a place to be used as a forum where those from every facet of the arts and sciences could get together'

Arthur Boyd, c1993

Cover: *From Impulse to Action*, 2022, Installation view. Photos: Zan Wimberley.
Above: *From Impulse to Action*, 2022, Installation view. Photos: Zan Wimberley.



1. MISSION

Bundanon’s mission is to support, develop and present creative arts practice across all forms; to further engagement with the natural world and the environmental sciences; and to enable public access to the arts, landscape and associated narratives with a strong emphasis on education for all ages.

2. OBJECTIVES

The overarching objective of Bundanon is to share its unique cultural and natural landscape with visitors, and to promote creativity, innovation and learning across the arts and sciences.

The goals of the Arts Program are:

- To encourage the exhibition and performance of work created at Bundanon, and to maintain Bundanon as a working art environment;
- To present the work of a diverse range of Australian and international creative practitioners today;
- To celebrate the built and natural environments of Bundanon and the Bundanon Collections, including the Boyd history and legacy.

The Arts Program delivers this objective through an annual program of exhibitions, collection displays, live performances, temporary installations, environmental and site-specific works, screenings, works-in-progress showings, talks and symposia. These activities will take place at the Art Museum and Homestead sites of Bundanon.

The Objectives of the Arts Program Policy are guided by The Constitution of the Bundanon Trust (see Appendix A for relevant excerpt of the Constitution).

Landscape of the Soul, installation view, as part of *Parallel Landscapes*, 2022. Photos: Zan Wimberley.

3. POLICY PURPOSE AND SCOPE

This policy provides the rationale for the development of the Bundanon Arts Program. It also provides guidance on Bundanon's different presentation models and considerations, overviews the decision-making process for the approval of the Arts Program, and outlines key governance controls.

This policy applies to all Bundanon employees (ongoing, non-ongoing, casual or otherwise) who are responsible for the Bundanon Arts Program. This policy applies to all exhibitions, displays, live works and performances presented at Bundanon and on tour in Australia and internationally.

4. POLICY PRINCIPLES

The following principles guide Bundanon's approach to developing its exhibition and performance programs:

- a) **Vision:** The Arts Program is informed by Bundanon's vision to share its unique cultural and natural landscape, and to promote creativity, innovation and learning across the arts and sciences.
- b) **Scope:** The Arts Program will include diverse Australian and international contemporary and historical content, with a focus on the work of living artists, First Nations and First Peoples practitioners. The Arts Program will support the continued development of Bundanon as a working arts environment, and as a research hub for the environmental sciences. The Arts Program will support diverse artforms including visual and performing arts, dance, literature and music, which are embedded in its Artist in Residency program onsite.
- c) **Values:** The Arts Program will realise through its activities the following shared values:
 - **Creative Risk:** To encourage creativity, experimentation and enquiry
 - **Sustainability:** Actively care for and share the cultural and natural assets in our stewardship
 - **Inclusion:** Advancing access, equity and diversity
 - **Accountability:** Base our governance and management on a commitment to integrity and transparency
- d) **Research and interpretation:** The Arts Program aims to meet the highest standards of research, delivering innovative and engaging approaches to interpretation, presentation, production and display.
- e) **Site and Collections amplification:** The Arts Program aims to celebrate, contextualise, interrogate and enable greater access to both the Bundanon environment and the Collections. The Bundanon Collections include artworks, books, furniture, rugs and archives. A dedicated Permanent Collection Gallery, housed within the Art Museum, will amplify Bundanon's art collection and associated research from 2024 onwards.
- f) **Inclusion:** Bundanon's Arts Program strives to be diverse and accessible to a wide range of specialists and general audiences, with a balanced program of exhibitions and events, including a variety of ticketing options to provide access to a broad audience. Access for existing, new and diverse audiences is enhanced through innovative display and production methodologies, artist-led and audience-focused programming, publications that extend the life and impact of exhibitions and projects, new research, creative partnerships, nationally relevant education connections, and digital projects and collaborations.

- g) **First Nations engagement and consultation:** Bundanon is committed to ethical and culturally sensitive research and presentation throughout the exhibition-making process. It will work closely with First Nations curators, advisors, local community and cultural advisory group in support of exhibitions planning, delivery, artistic residencies, live works and artists' liaison as a cornerstone of its Arts Program. First Nations inclusion in exhibitions and educational programs, cultural safety protocols, community and stakeholder relationships, and environmental activity onsite will be supported through the organisation's Cultural Liaison Manager and identified Board director.

5. EXHIBITION AND PRESENTATION MODELS

Bundanon offers a balanced program of exhibitions and live events. Ticket prices are benchmarked against relevant cultural institutions and formative market research and non-ticketed events are also supported for community and educational engagement.

Bundanon employs several exhibition and event models in its programming. These include but are not limited to:

- a) Exhibitions that present new works by artists from across the disciplines that were created in residence or through a series of site visits;
- b) Monographic, survey or thematic exhibitions that present the work of individual creative practitioners, collectives, companies or groups;
- c) Exhibitions or performances that mobilise responses to Bundanon, to the natural environment or to the Collections;
- d) Presentations of live works, either as a single performance or as a series. These events can be a part of, or responding to an exhibition in the Art Museum or Homestead; they might be a part of a larger seasonal program, or form a festival or event in and of themselves;
- e) Temporary installations in the landscape, with or without participatory or live performance aspects;
- f) Exhibitions and live performances by the artists and knowledge holders of the language groups of the Dharawal and Dhurga people, Aboriginal and Torres Strait Islander artists and First Peoples worldwide;
- g) Collections-based exhibitions or presentations that utilise loans from other organisations, and that have the potential to tour regionally and nationally.

6. ADMINISTRATION AND OPERATIONS

6.1 PROPOSALS AND APPROVAL PROCESS

Exhibition Proposals

Exhibition proposals may be accepted from internal and external sources; however, Bundanon does not support unsolicited proposals. Predominantly, the exhibitions are developed by Bundanon's curators or in collaboration with partner institutions or guest curators. Preliminary exhibition proposals are submitted to the CEO by the Head of Curatorial and Learning, then scheduled for presentation and discussion with the curatorial, programs and collections team. The presentation includes indicative information about scope, timing and scale, audience and community engagement, any works of art containing sensitive content and a deadline for approval given the proposal scope.

Once the preliminary exhibition proposal is approved, the Exhibition and Collection Managers are briefed and will work with the curators to develop a more extensive exhibition scoping document

including further details on schedules, budget and staffing impacts, and ticketing decisions. The exhibition is approved by the CEO and then included in the annual exhibitions program, ensuring a balance of projects that support the organisation's constitution, diverse artforms and audiences. The CEO advises and briefs Bundanon's Board of Directors on the annual exhibitions program, ensuring that information is timely, informative, and meets Bundanon's constitutional remit and reporting obligations.

Performance and Live Event Proposals

Performance proposals may be accepted from internal and external sources. Predominantly, performance events and programs are developed by the Bundanon public programs team and curators in association with the exhibitions program; or as stand-alone events across the wider site. These may be organised with individual artists, collectives or companies, or with a collaborating performing arts company or partner institution. Preliminary performing arts proposals are submitted to the CEO, then scheduled for presentation and discussion including indicative information about the scope, timing and scale, audience and community engagement, any aspect containing sensitive content and a deadline for approval given the proposal scope. The performance or live event is approved by the CEO and then included in the live programs and events schedule.

Submissions of proposals and confirmation of approvals must be done in a timely manner, with initial submissions for Art Museum exhibitions provided at least 12 months prior to delivery (longer where large-scale production support is required). Confirmation of approval must be given allowing reasonable time for the development, production and delivery of the exhibition or production. Approvals should be confirmed according to the schedule and deadline outlined in the proposal.

6.2 EXHIBITION AND EVENT BUDGETS

All proposals will be carefully evaluated for financial feasibility prior to commencement.

This includes consideration of:

- Projected financial outcomes;
- Balancing the need for ticketed revenue with non-ticketed exhibitions, which is essential to providing wider access for Australian audiences and local community on the south coast, including First Nations access and inclusion;
- Ensuring adequate funding is available.

6.3 CONFLICTS OF INTEREST

As the cultural sector, both nationally and internationally, is highly dependent on networks and relationships, it is important that any conflicts of interest in the development of exhibitions or events - including selection of artists, works of art, touring venues, contractors, or suppliers is declared.

If a conflict of interest exists, the individual concerned should exclude themselves from any discussion or decision in relation to matters in which they have declared an interest and take any other action in accordance with Bundanon policies.

6.4 CRITERIA FOR PROPOSALS

In line with the values of Bundanon, the proposals for Arts Programs will champion creative risk, sustainability, inclusion and accountability.

In order to deliver an arts program with diverse Australian and international contemporary and historical content, with a focus on the work of living artists and First Nations and First Peoples practitioners, supporting Bundanon as a working arts environment and as a research hub for the environmental sciences, two or more of the following criteria should be addressed as a part of the proposal and the approval process:

- New work or commission, including site visits and/or residency at Bundanon, national or international;
- Contains artform diversity;
- Draws on or responds to Boyd's work, legacy and/or the Bundanon Collections;
- Supports or presents the work of First Nations or International Indigenous creatives;
- Supports or connects to environmental science research or ;
- Offers targeted social impacts (eg for LGBTQI+, CALD, people with disabilities, regional limited access groups, unemployed young people);
- Offers potential for educational and learning program connections.

6.5 FACILITIES

The available venues for exhibitions and live events include but are not limited to the Art Museum, Homestead, Boyd Studio, Boyd Education Centre, Bridge for Creative Learning, the heritage buildings and natural landscape within the care of Bundanon across the four properties (Bundanon, Riversdale, Earie Park and Beeweere properties).

Facilities reports can be provided for the Art Museum and the Homestead, and floorplans and elevations can be supplied for the Art Museum, Boyd Education Centre, Homestead and Library. The Art Museum is the only climate-controlled presentation space at Bundanon.

6.6 PERIOD OF DISPLAY OR PRESENTATION

All arts programs at Bundanon will be temporary or long-term but not permanent, including exhibitions, collection displays, outdoor installations, site-specific and time-based works. This allows Bundanon to operate as a working art environment, whereby artists of all disciplines can continue to respond and make new work for and in the natural environment on an ongoing basis.

Currently, the Art Museum schedule entails three (3) exhibition seasons per year and the Homestead presents an annual Collections display, but this may be reviewed according to strategic goals, staffing levels and budgets available. The new, dedicated Permanent Collection Gallery in the Art Museum will be launched in 2024, offering wider access to collections, archival materials and research, and deepening engagement for a wide array of audiences.

7. REVIEW

This Arts Program Policy will be reviewed in 12 months and every 24 months in the following years.

APPENDIX A

Excerpt from The Constitution of the Bundanon Trust pertinent to the Arts Program Policy.

- 3.(a) The object for which the Company is established is, as a celebration of the importance of the Arts and the Australian landscape in the lives of Australians, to enhance particularly through creative activities at “Bundanon” education in the Arts and the Australian landscape and to that end;
- (i) to establish and maintain at “Bundanon” a permanent home for the retention and exhibition of the Trust Art Works;
 - (ii) to conserve, maintain, promote and exhibit to the public, “Bundanon”, and particularly the Trust Art Works and to develop by additions from time to time and maintain, as a collection, the Trust Art Works;
 - (iii) to establish and maintain in a suitable location on “Bundanon” an Exhibition Performance Space for the dual purposes of:
 - (a) exhibiting the Trust Art Works and other Works; and
 - (b) providing a venue for music, dance and other performance Works: and in particular to encourage in the Exhibition-Performance Space the exhibition and performance of Works made at “Bundanon”;
 - (iv) to encourage members of the Australian Public to view the Trust Art Works and other Works from time to time on exhibition or performed at “Bundanon”;
 - (v) to establish and maintain a public art gallery in an eligible building or buildings on Bundanon and apply the proceeds of any gift in respect of which a deduction has been claimed by the donor pursuant to Section 78 (1)(a)
 - (xxvii) or 78(1)(aa) of the Income Tax Assessment Act 1936 solely towards the said public art gallery and its building or buildings and maintain in the books of account of the Company a separate account in respect of such public art gallery;
 - (vi) to establish and maintain at “Bundanon” a creative and working art environment and to provide facilities (including living accommodation) for the expression through the visual arts, performance Arts, music, literature and crafts (“the Arts”) by painters, sculptors, crafts people, musicians, film makers, composers, dancers and other visual and performing artists and writers to work on specific projects on an artists-in residence programme and to provide the opportunity (whenever practical) for the exhibition, performance or reading, as the case may be, of such finished work or if unfinished the work-in-progress at “Bundanon”;
 - (vii) To conduct, wherever possible with other educational institutions, research activities, conferences, seminars, workshops, master classes, rehearsals, festivals and other educative activities relating to the Arts;
 - (viii) To establish links with schools of art and other institutions offering tuition in the Arts to enable students attending such schools or institutions to be involved in the making of Works in the working art environment of “Bundanon”;
 - (ix) to promote, encourage and develop the knowledge, understanding, appreciation, enjoyment participation in and practice of the Arts by the Australian Public:
 - (x) to promote, encourage and support the dissemination of information concerning the Arts in Australia including “Bundanon” and the Trust Art Works;
 - (xi) to stimulate and generate interest and active participation in the Arts, by the Public generally, regional community groups and individuals at all levels and by Artists in any way whatsoever, and in particular by maintaining “Bundanon” as a working art environment;

- (xi) to promote, foster, sponsor, encourage and support from “Bundanon” the performance and execution of Performing Arts within Australia, by any means whatsoever, including by providing facilities for:
 - (a) the writing of Works for theatrical performance in any form;
 - (b) producers, writers, players, musicians, singers, dancers and other performance artists and theatre personnel in any way whatsoever;
 - (c) the rehearsal and production of Works: and
 - (d) the performance of Works;
- (xii) to assist Australians wishing to further their study and practise of the Arts by providing facilities and assistance of any kind whatsoever and without limiting the generality of the foregoing including the awarding of prizes, scholarships and sponsorships, and other forms of assistance for any project within the scope of the Objects;
- (xiii) to conserve and preserve the Cultural Heritage situate at “Bundanon”, to provide controlled access to the Australian public and to encourage their appreciation and understanding of that Cultural Heritage;
- (xiv) to conduct, arrange or promote research into the Environment of the Shoalhaven Region and to make available to the Shoalhaven Community in particular, and the Australian public generally, the results of any research;
- (xv) to conserve and preserve the Natural Heritage at “Bundanon”, and to provide facilities and controlled access by the Australian public to “Bundanon” and the Shoalhaven River in order to encourage the appreciation and understanding of the Natural Heritage and Environment at “Bundanon”

[end of excerpt]