

# DOROTHY DWYER SILVERSMITHS' STUDIO

Handbook



BUNDANON

# CONTENTS

Studio equipment list	3
What to bring	4
Studio layout	5
The space	6
The tools	9
About Dorothy Dwyer	16
Thank you	17



# WELCOME TO DOROTHY DWYER SILVERSMITHS' STUDIO

The Dorothy Dwyer Silversmiths' Studio is our newest facility. It provides all the necessary working conditions, equipment & tools for professional silversmiths & jewellers to pursue their practice, & is the result of the generosity of the family of celebrated silversmith Dorothy Dwyer

Bundanon Trust is grateful for the generosity of Mikala & Stephanie Dwyer & the professional advice of Valerie Odewahn.

Enjoy, create & share.

# STUDIO EQUIPMENT LIST

The following tools & equipment are available for your use whilst in residence at the Dorothy Dwyer Silversmiths' Studio.

## TOOLS & EQUIPMENT

- Anvils
- Basic small hand tools (files, doming punches)
- Stakes & hammers
- Snips
- Bench with chair
- Bench shear
- Bench vice
- Swivel vice (on log)
- Orca soldering torch (LPG)
- Bigger torch (LPG)
- Proxxon drill press
- Grinder
- Micromotor
- Polishing motor, some buffs & compounds
- Rolling mill (flat 60mm & wire)
- Saw-frames (three sizes)
- Scratch brush (aged)
- Old motorised scratch brush
- Soldering bench with fume extraction
- Fume cabinet for pickle
- Slow cooker for pickle
- Magnified lamp
- Heat gun
- Ozito sander
- General purpose tools (e.g., hacksaw, screwdrivers, spanners etc.)
- Steel rules
- Double kitchen sink
- Reference library
- Kettle

## CONSUMABLES SUPPLIED

- Degergent
- Ammonia
- Carb soda (for neutralising pickle & cleaning)
- Granular citric acid & sparex
- Light oil (for maintenance)
- Graphite (for maintenance)
- WD40 (for maintenance)
- White spirit (for cleaning rolling mill)
- White vinegar (for patination & cleaning)
- Basic flux (borax cone)
- First aid kit
- Cold tank water
- LPG

# WHAT TO BRING

Residents will need to bring their own:

- Abrasive papers, emery sticks, scotchbrite, etc.
- Solders, fluxes, solder pick, solder tweezers, third hand & other soldering accessories
- Adhesives
- Disposable gloves compatible with materials being used.
- Hand towel
- Special files
- Special parination chemicals, if required (and remember to take them with you)
- Personal Protective Equipment (PPE) including:
  - Eye protection (Australian Standards approved for medium impact, not just glasses)
  - Hearing protection (over ear type)
  - Foot protection (leather shoes or boots covering the entire foot)
  - Gloves (compatible with materials in use)
  - Dust mask (suitable for the material being worked on, minimum P2 standard)
  - Apron

& any tools particular to process or project, e.g.:

- Favourite pliers
- Loupe
- Flexi bits (there are some, there but not all types & shapes)
- Matches
- Sawblades
- Materials
- Small drill bits
- Hand scratch bush & washout brush
- Cutting mat
- Drawing equipment

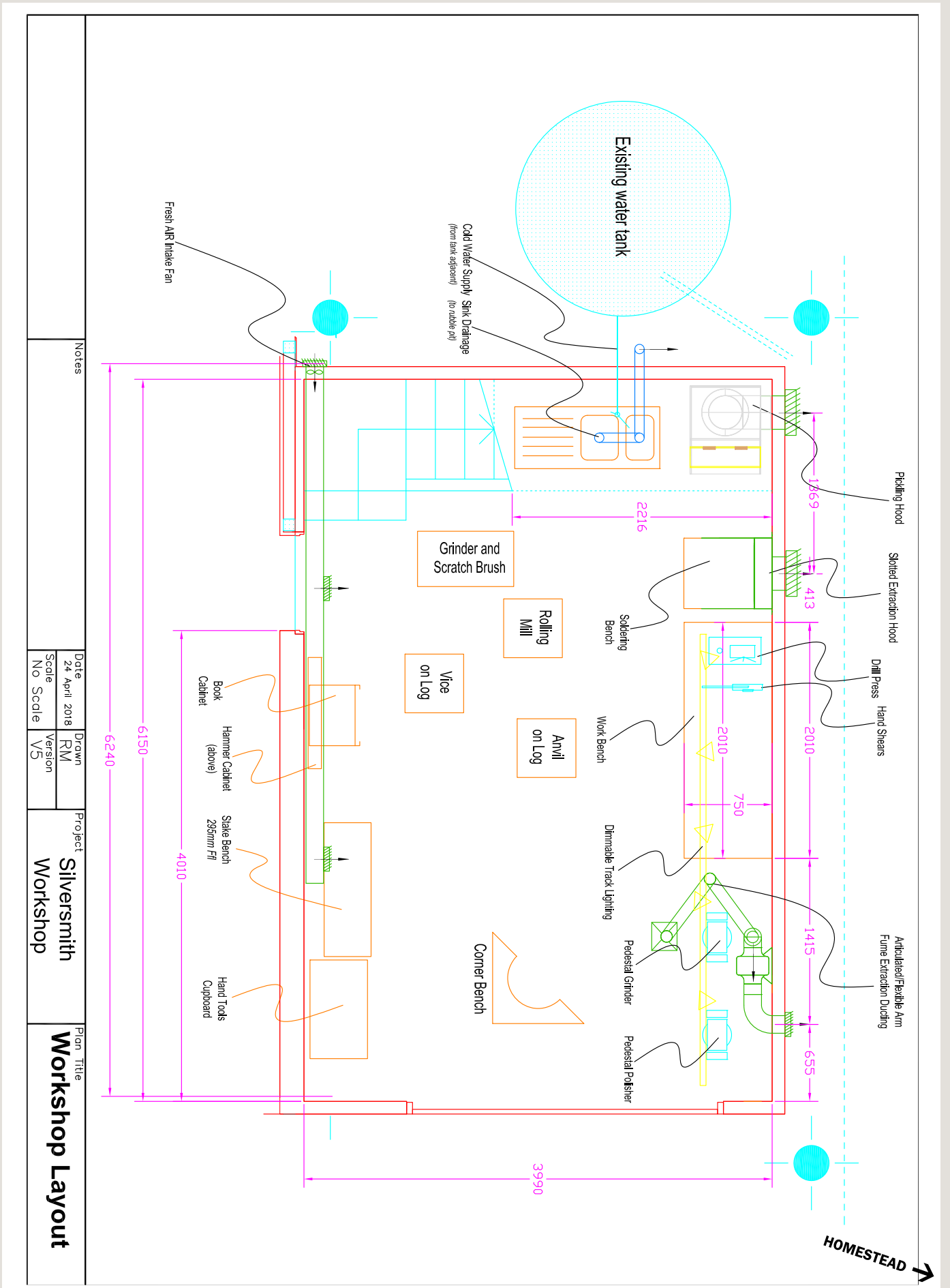
# UNAVAILABLE EQUIPMENT

To aid in your preparation, we have compiled a list of equipment commonly desired by artists that is currently unavailable within our facilities:

- Enameling kiln
- Drawbench or drawplates
- Large flat planishing block (but stakes and anvils are available)
- Oxy/LPG torch
- Tumbler

Please consider these limitations when planning your projects.

# STUDIO LAYOUT



Notes		Date		Project		Plan Title	
		24 April 2018		Silversmith		Workshop Layout	
		Scale		Version			
		No Scale		V5			

# THE SPACE



# THE SPACE



# THE SPACE



# THE TOOLS



# THE TOOLS



# THE TOOLS



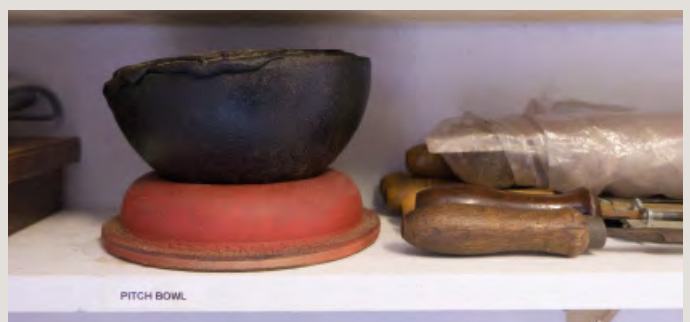
# THE TOOLS



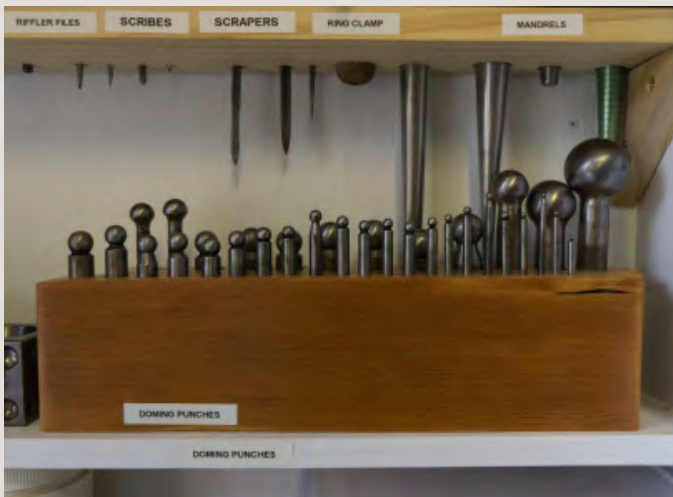
# THE TOOLS



# THE TOOLS



# THE TOOLS



# ABOUT DOROTHY DWYER

This studio has been created through a bequest from artists Stephanie & Mikala Dwyer to honour their mother, the acclaimed silversmith Dorothy Dwyer. The working tools from Dorothy's Sydney studio were installed at Bundanon in 2017 to provide for artists in residence working with silver & gold.



Ellen Dorothy Bjorn was born in Melbourne in 1925 to Danish parents Otto Nielsen & Ebba Margrethe Bjorn. After returning to Denmark with her mother at age 4, she was raised by her Moster (Aunt) whilst her mother worked abroad. She returned to Australia at the age of 27 where she trained as a radiographer at Royal North Shore Hospital.

In 1957 Dorothy married her husband Peter Dwyer after meeting on a skiing trip. An adventurous couple, they lived in an old caravan whilst they rebuilt a condemned, rudimentary stone cottage in Hunters Hill. During this time she had two daughters Mikala & Stephanie.

In the 1960's she began attending East Sydney Technical College studying many disciplines before discovering Silversmithing towards the late 60's. She then trained with Walraven van Heeckeren, developing her technical skill & exploring her innate sense of pure form inherited from her Danish background.

Throughout her career Dorothy participated in many exhibitions along with her peers at Quadrivium gallery, Queen Victoria Building, Sydney, The Hunters hill art show, & The Worn issues exhibition. She was a long-time member of JMGA. Dorothy began teaching in the Harrington Street studios & worked weekends, demonstrating in the Argyle Arts Centre in the Rocks. She taught in the Summer Schools at Sturt College & Toowoomba & attended workshops by visiting Metal workers in order to perfect her techniques & become a master crafts woman.

Over time Dorothy established an impressive workshop that became her sanctuary. She spent many hours happily banging away on hard & soft metals, performing alchemies with all manner of matter & enjoying the challenges of Holloware. Although suffering from arthritis in her later years, she would always find a way into her workshop & into that joy & pure focus of making, all the way till she died in 2010.

We are delighted to see her workshop recreated in Bundanon & to know that many silversmiths & jewellers will enjoy her beautiful collection of tools.

Mikala & Stephanie Dwyer

# THANK YOU

*We are delighted to see her workshop recreated in Bundanon in such a thoughtful way, & we know Dorothy would be over the moon to know that many silversmiths & jewellers will enjoy her beautiful collection of tools.*

*We are particularly grateful to Deb Ely & Valerie Odewahn for their vision, patience, care & hardwork in creating this workshop in its new & magnificent location at Bundanon.*

*Many thanks  
Mikala & Stephanie Dwyer*

Bundanon would like to thank Mikala & Stephanie Dwyer & their family for this generous gift. The Trust is also grateful for the professional advice & care taken by Valerie Odewahn during the installation & set up of the studio space.

Thank you also to those resident jewellers & silversmiths who have worked in the space thus far & provided valuable feedback.



Top to bottom, left to right; Portrait Mikala Dwyer. Photo Dylan Robinson. Jewellery Torch. Portrait Valerie Odewahn. Photo: Heidrun Lohr. Portrait Dorothy Dwyer. Photo: Dwyer Family



**BUNDANON**